

# Model CTF878

## Clamp-On Tag Flowmeter Service Manual





# Model CTF878

Clamp-On Tag Flowmeter

Service Manual

BH010C61 Rev. A

AUG 2021

[panametrics.com](http://panametrics.com)

Copyright 2021 Baker Hughes company.

This material contains one or more registered trademarks of Baker Hughes Company and its subsidiaries in one or more countries. All third-party product and company names are trademarks of their respective holders.

[no content intended for this page]

---

## Warranty

Each instrument manufactured by Panametrics Sensing, Inc. is warranted to be free from defects in material and workmanship. Liability under this warranty is limited to restoring the instrument to normal operation or replacing the instrument, at the sole discretion of Panametrics. Fuses and batteries are specifically excluded from any liability. This warranty is effective from the date of delivery to the original purchaser. If Panametrics determines that the equipment was defective, the warranty period is:

- one year for general electronic failures of the instrument
- one year for mechanical failures of the sensor

If Panametrics determines that the equipment was damaged by misuse, improper installation, the use of unauthorized replacement parts, or operating conditions outside the guidelines specified by Panametrics, the repairs are not covered under this warranty.

---

**The warranties set forth herein are exclusive and are in lieu of all other warranties whether statutory, express or implied (including warranties of merchantability and fitness for a particular purpose, and warranties arising from course of dealing or usage or trade).**

---

## Return Policy

If a Panametrics Sensing, Inc. instrument malfunctions within the warranty period, the following procedure must be completed:

1. Notify Panametrics Sensing, Inc., giving full details of the problem, and provide the model number and serial number of the instrument. If the nature of the problem indicates the need for factory service, Panametrics Infrastructure Sensing, Inc. will issue a RETURN AUTHORIZATION number (RA), and shipping instructions for the return of the instrument to a service center will be provided.
2. If Panametrics instructs you to send your instrument to a service center, it must be shipped prepaid to the authorized repair station indicated in the shipping instructions.
3. Upon receipt, Panametrics will evaluate the instrument to determine the cause of the malfunction.

Then, one of the following courses of action will then be taken:

- If the damage is covered under the terms of the warranty, the instrument will be repaired at no cost to the owner and returned.
- If Panametrics determines that the damage is not covered under the terms of the warranty, or if the warranty has expired, an estimate for the cost of the repairs at standard rates will be provided. Upon receipt of the owner's approval to proceed, the instrument will be repaired and returned.

[no content intended for this page]

**Chapter 1.**

1.1 Diagnostics .....-1  
 1.1.1 Introduction .....-1  
 1.1.2 Entering the Service Menu .....-1  
 1.1.3 Displaying Diagnostic Parameters..... 0  
 1.1.4 Signal Setup .....1  
 1.1.5 Setting Error Limits..... 2  
 1.1.6 The Test Option..... 4

**Chapter 2.**

2.1 Resetting and Updating ..... 9  
 2.1.1 Introduction ..... 9  
 2.1.2 Entering the Service Menu..... 9  
 2.1.3 Resetting to Factory Default Parameters..... 10  
 2.1.4 Updating CTF878 Software..... 11

**Chapter 3.**

3.1 Calibration ..... 19  
 3.1.1 Introduction ..... 19  
 3.1.2 Entering the Calibration/Test Menu ..... 19  
 3.1.3 Testing and Calibrating Analog Outputs..... 20  
 3.1.4 Testing and Calibrating Analog Inputs..... 22  
 3.1.5 Testing and Calibrating Digital Outputs..... 24  
 3.1.6 Testing and Calibrating RTD's..... 25  
 3.1.7 Testing EEPROM's..... 26

**Chapter 4.**

4.1 Troubleshooting .....31  
 4.1.1 Introduction .....31  
 4.1.2 Error Code Messages .....31  
 4.1.3 Displaying Diagnostic Parameters.....33  
 4.1.4 Pipe/Fluid Problems.....34  
 4.1.5 Transducer Problems .....34

**Chapter 5.**

5.1 Parts Replacement ..... 37  
 5.1.1 Introduction ..... 37  
 5.1.2 Replacing the Fuse..... 38  
 5.1.3 Removing the Printed Circuit Board..... 39  
 5.1.4 Installing an Option Card ..... 40  
 5.1.5 Installing the Printed Circuit Board..... 41  
 5.1.6 Replacing the LCD Display ..... 42  
 5.1.7 Spare Parts ..... 43

**Appendix A.**

A.1 Service Record..... 47  
 A.1.1 Introduction ..... 47  
 A.1.2 Data Entry..... 47





# Chapter 1.

## 1.1 Diagnostics

### 1.1.1 Introduction

For convenience, the CTF878 offers a Service Menu (see the *Service Menu Map*, Figure 3-10 on page 3-11). This menu enables the user to perform a variety of functions that might occasionally be required. Those covered in this chapter include:

- run diagnostics
- set up signal and data processing parameters
- define error limits
- test the CTF878 screen and keys
- diagnose setup problems

### 1.1.2 Entering the Service Menu

To enter the Service Menu, press the **[MENU]** key at the lower right of the CTF878 keypad. The Menu Bar replaces the Status Bar at the top of the screen. Press the **[▶]** arrow key to scroll from the Site Menu to the Service Menu. At the Service Menu, press **[ENTER]**. The screen appears similar to Figure 1 below.

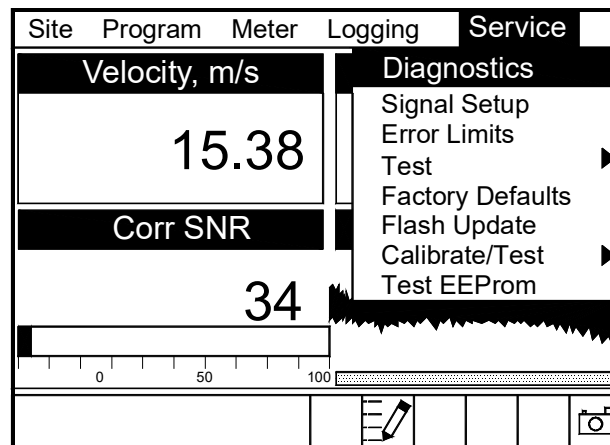


Figure 1: Service Menu

To scroll to a particular option, press the **[▼]** or **[▲]** arrow keys until you reach the option. Then press **[ENTER]** to open the option window.

When entering parameters in an option, press:

- the **[▼]** key to step through the available parameters.
- the **[▲]** key to scroll back to a previously entered parameter.
- the **[F2]** key (Cancel) or the **[ESC]** key to exit an option at any time and return to Operate Mode without changing the parameters.

### 1.1.3 Displaying Diagnostic Parameters

The Diagnostics option enables you to view current diagnostic parameters without having to open a display window in Operate Mode. To enter the option, scroll to the Diagnostics entry on the Service Menu and press **[ENTER]**. The screen appears similar to Figure 2 below.

Diagnostic Tests		
Meter Error 0x0004	Up	Down
Carr A	1000	992
Carr G	9.72	7.26
I A	390	487
Q A	680	586
Mod G	-3.13	-4.65
TAU		19.25
Corr SNR		34

Figure 2: Diagnostics Tests Window

Press **[F2]** (Cancel) or **[F3]** (OK) to close the window and return to Operate Mode.

**Note:** For an explanation of diagnostic parameters, refer to Chapter 4, Troubleshooting.

### 1.1.4 Signal Setup

The Signal Setup option enables you to set parameters that affect the flowmeter's signal processing and outputs:

- Zero Cutoff
- Velocity Averaging
- Errors Allowed

To enter the option, scroll to the Signal Setup entry on the Service Menu and press **[ENTER]**. The screen appears similar to Figure 3 below.

The image shows a 'Signal Setup' window with a title bar. Below the title bar are four tabs: 'Signal', 'AgcMgc', 'CCorr Avg', and 'LP Filter'. The 'Signal' tab is selected. Inside the window, there is a checkbox for 'Reverse Flow' which is unchecked. Below this are three rows of settings: 'Zero Cutoff' with a value of '.5' and units 'm/s'; 'Velocity Averaging' with a value of 'None'; and 'Errors Allowed' with a value of '2'. At the bottom of the window are two buttons: 'Cancel' and 'OK'.

Figure 3: Signal Parameter Window

#### 1.1.4.1 Setting Up Signal Parameters

1. Press the **[▼]** arrow key to enter the window.
2. The first prompt allows you to select or not select Reverse Flow.
  - a. Press **[ENTER]** to select Reverse Flow, and press the **[▼]** arrow key to enter the next prompt, or
  - b. Press **[ENTER]** again to deselect Reverse Flow, and press the **[▼]** arrow key to enter the next prompt.

3. The next prompt asks for the Zero Cutoff. Near “zero” flow, the CTF878 may have fluctuating readings due to insufficient flow information. The zero cutoff causes velocity measurements less than the cutoff to be reported as zero. To set the cutoff:
  - a. Press [ENTER] to open the text box.
  - b. Use the numeric keys to enter the desired value.
  - c. Press [ENTER] to confirm your entry.
  - d. Press the [▼] arrow key to enter the next prompt.
4. The next prompt asks for Velocity Averaging.
  - a. Press [ENTER] to open the drop-down list (from 2 to 100).
  - b. Use the [▼] or [▲] arrow keys to scroll to the desired number of velocity measurements to average together to smooth out noise in the system.
  - c. Press [ENTER] to confirm your selection.
  - d. Press the [▼] arrow key to enter the next prompt.
5. The final prompt, Errors Allowed, specifies the number of errors the meter can record before displaying an error message. (The default is 2.)
  - a. Press [ENTER] to open the text box.
  - b. Use the numeric keys to enter the desired value.
  - c. Press [ENTER] to confirm your entry.

You have finished entering data in the Signal Parameter window. To leave this window,

- Press the [▲] key to return to the Signal Parameter tab, and the [▶] arrow key to move to the other tabs. When the desired tab is highlighted, press [ENTER] to view its contents.
- Or, press [F2] (Cancel) to return to Operate Mode without confirming the changes.
- Or, press [F3] (OK) to confirm the new data. The CTF878 returns to Operate Mode.

**IMPORTANT:** Do not change the remaining Signal Setup options:

AgcMgc - Automatic or Manual Gain Control  
 CCorr Avg - Cross Correlation Average  
 LP Filter - Low Pass (Digital) Filter

They should be set up only by field service engineers.

### 1.1.5 Setting Error Limits

The Error Limits option enables you to set limits for the signals received from the transducers and the limits for some outputs. When the parameter falls outside the programmed limits, an error indication appears. To enter this option, scroll to the Error Limits entry on the Service Menu and press [ENTER]. The screen appears similar to Figure 4 below.

Signal Error Limits		
	Min	Max
SNR Min	10	
Velocity	-100	100 m/s
Acceleration		15 m/s
Carrier	75	1200 mV
DMod	75	1500 mV
<input type="button" value="Cancel"/> <input type="button" value="OK"/>		

Figure 4: Signal Error Limits Option

- The first prompt asks for the minimum error limit for the correlation signal-to-noise ratio (SNR) calculated by the CTF878. The default value is 10. The E8: SNR error message appears if the SNR falls below the limit programmed here.

**IMPORTANT:** SNR Min should be changed from factory default settings only if absolutely necessary. These settings may be changed by qualified field service engineers, only.

To enter the minimum SNR:

- Press **[ENTER]** to open the text box.
  - Use the numeric keys to enter the desired value.
  - Press **[ENTER]** to confirm your entry.
  - Press the **[▶]** or **[▼]** key to move to the next limit.
- The next prompt calls for the low and high velocity limits. The E9: VELOCITY RANGE error message appears if the velocity falls outside these limits. Repeat Step 1 above to enter the desired limits.
  - The next prompt asks for the acceleration limit for detecting erroneous velocity outputs. The E10: ACCELERATION ERROR message appears if the velocity changes by more than this limit from one reading to the next.
    - Press **[ENTER]** to open the text box.
    - Use the numeric keys to enter the acceleration limit.
    - Press **[ENTER]** to confirm your entry.

**Note:** In the velocity and acceleration boxes, if the CTF878 currently displays metric measurements, the F1 softkey displays the word "English." If it displays English measurements, the F1 softkey displays "Metric." Press **[F1]** to display the measurement in the alternate format.

- The last four prompts ask for the minimum and maximum values in millivolts for the Carrier and DMod categories.

**IMPORTANT:** Carrier and DMod should be changed from factory default settings only if absolutely necessary. These settings may be changed by qualified field service engineers, only.

To change the Carrier and/or DMod settings:

- Press **[ENTER]** to open the text box.
- Use the numeric keys to enter the desired voltage.
- Press **[ENTER]** to confirm your entry.

You have completed entering signal error limits.

- Press **[F2]** (Cancel) to return to Operate Mode without confirming the error limits, or
- Press **[F3]** (OK) to confirm the new limits and return to Operate Mode.

### 1.1.6 The Test Option

Within the Service Menu, the Test option includes three tests to ensure that the CTF878 is performing properly: Test Screen, Test Keys and Watchdog Test. To enter this option, scroll to the Test entry on the Service Menu and press **[ENTER]**. The screen appears similar to Figure 5 below.

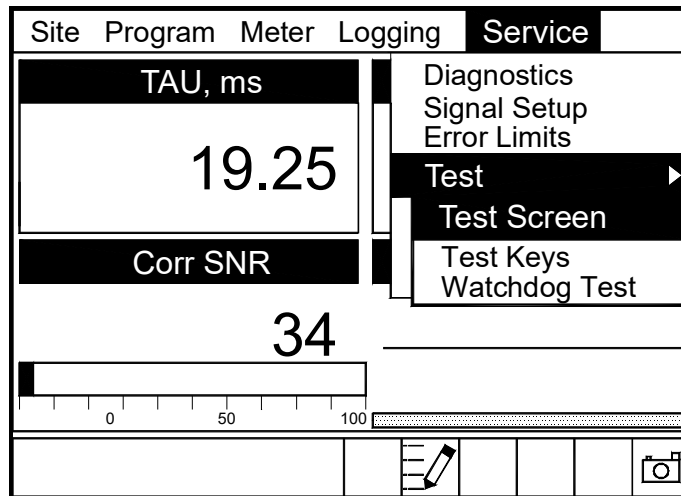


Figure 5: Test Option under Service Menu

Scroll to the desired entry in the option menu and press **[ENTER]**.

### 1.1.6.1 Testing the Screen

To test the proper functioning of the CTF878 screen, scroll to the Test Screen option in the Test Menu and press **[ENTER]**. The screen then shows the message, "Press Any Key To Continue." Once you press a key, a screen with a checkerboard pattern appears, as in Figure 6 below.

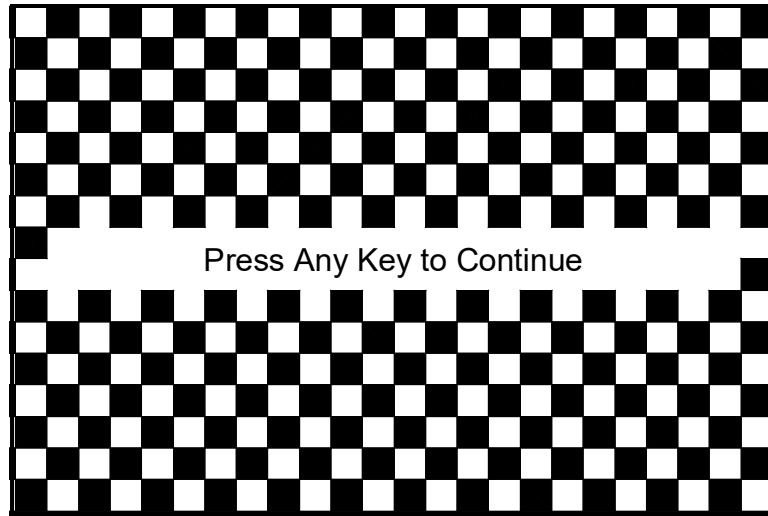


Figure 6: A Functioning Test Screen

Pressing a key two more times should result in two more checkerboard patterns, followed by a series of dark and light screens. Pressing the key through this sequence should return the CTF878 to Operate Mode. If the test does not proceed according to this sequence, please consult the factory.

### 1.1.6.2 Testing the Keys

The Test Keys option checks the functioning of the various keys on the keypad. To start the test, scroll to the Test Keys option on the Test Menu and press **[ENTER]**. The screen appears similar to Figure 7 below. Press any key on the keypad, and a cell representing that key should darken.

Test Keys					
	F1	F2	F3		
			?	ESC	SEL
1	2	3		↑	
4	5	6	←		→
7	8	9		↓	
,	0	-	MENU		ENTER
					Exit

Figure 7: The Test Keys Window

Pressing the **[F3]** key returns the meter to the Operate Mode. If any key does not appear on the screen, contact the factory.



### 1.1.6.3 Testing the Watchdog Timer Circuit

The CTF878 includes a watchdog timer circuit. If a software error causes the meter to stop responding, this circuit automatically resets the meter. A properly functioning CTF878 restarts if you run the Watchdog Test.

To start the Watchdog Test, scroll to the Watchdog Test option in the Test Menu and press **[ENTER]**. The screen appears similar to Figure 8 below.

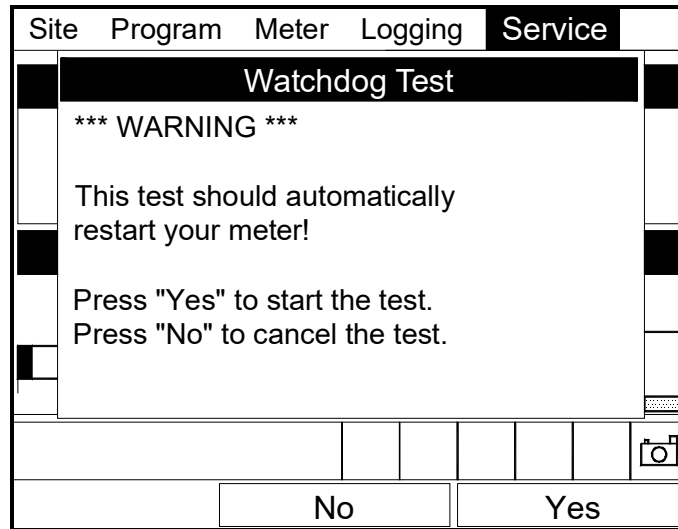


Figure 8: Watchdog Test Screen

Press **[F2]** (No) to cancel the test and return to the Menu screen, or press **[F3]** (Yes) to start the test. The CTF878 should go blank for a few seconds, and then restart. If it does not follow this sequence, consult the factory.

[no content intended for this page]

## Chapter 2.

### 2.1 Resetting and Updating

#### 2.1.1 Introduction

For user convenience, the CTF878 offers a Service Menu. This menu enables users to perform a variety of functions that they might occasionally require. Those covered in this chapter include:

- return to factory default parameters
- load updated versions of the meter program into the CTF878

#### 2.1.2 Entering the Service Menu

To enter the Service Menu, press the **[MENU]** key at the lower right of the CTF878 keypad. The Menu Bar replaces the Status Bar at the top of the screen. Press the **[▶]** arrow key to scroll from the Site Menu to the Service Menu. At the Service Menu, press **[ENTER]**. The screen appears similar to Figure 9 below.

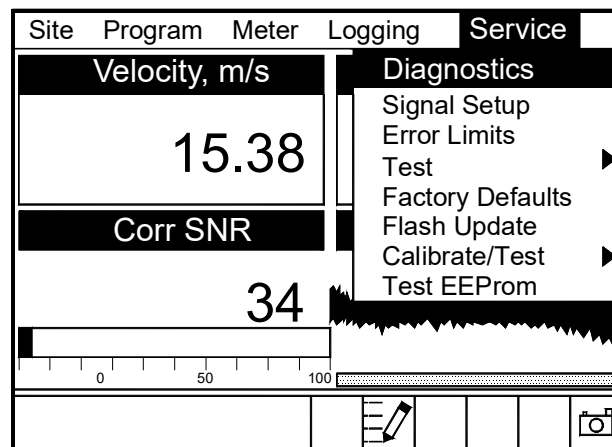


Figure 9: Service Menu

To scroll to a particular option, press the **[▼]** or **[▲]** arrow keys until you reach the option. Then press **[ENTER]** to open the option window.

When entering parameters in an option, press:

- the **[▼]** key to step through the available parameters.
- the **[▲]** key to scroll back to a previously entered parameter.
- the **[F2]** key (Cancel) or the **[ESC]** key to exit an option at any time and return to Operate Mode without changing the parameters.

### 2.1.3 Resetting to Factory Default Parameters

For various reasons, you might wish to return the CTF878 to its original settings. The Factory Defaults option enables you to return the meter to its preprogrammed default settings. To enter the option, scroll down to the Factory Defaults entry in the Service Menu and press [ENTER]. The screen will appear similar to Figure 10 below.

**IMPORTANT:** All sites and logs will be lost if you use the Factory Defaults option.

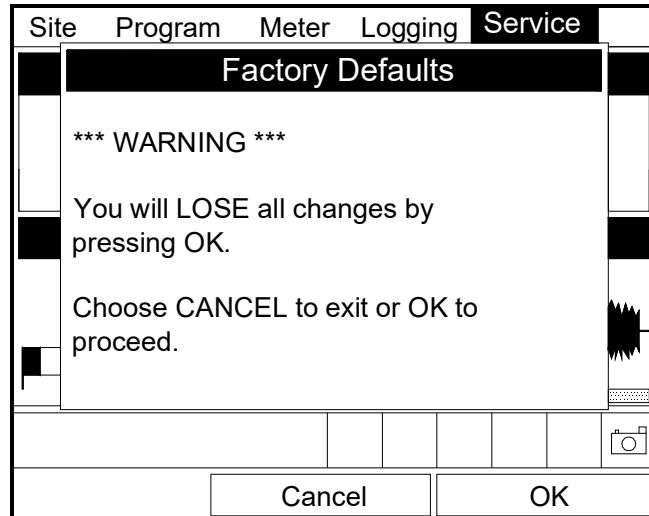


Figure 10: The Factory Defaults Option

1. To restore Factory Default settings:
  - Press [F2] (Cancel) to return to Operate Mode without changing the current settings.
  - Press [F3] (OK) to confirm that you wish to restore the factory default settings.
2. The program asks for confirmation: "Are you SURE?" Repeat the procedure shown in Step 1 above.

The CTF878 replaces the default site file and the global meter settings with the factory default settings, and returns to Operate Mode.

### 2.1.4 Updating CTF878 Software

By using a Windows-based PC with an RS232 connection, CTF878 users can update the meter's operating software. This software can include the bootloader, FPGA software (timing software for transit-time), instrument software, the meter string file and the Help string file. The updating procedure involves three steps:

1. Setting up the CTF878 in Flash Update mode.
2. Selecting the loading interface.
3. Loading the new software from the PC into the CTF878.

**CAUTION!**

**To guard against mishap, you should print out, download or otherwise record all logs, settings and other data you wish to save.**

**IMPORTANT:** When uploading new software, the CTF878 uses a "bootloader" program. Be sure the software you are installing is compatible with the installed bootloader version (see The About Option on page 4-11 of the StartUp Guide or page 3-11 of the Programming Manual). If both programs are to be replaced, install the new bootloader first, before any other software.

### 2.1.4.1 Preparation

To prepare the CTF878 for a software update:

1. Disconnect the power to the CTF878.

**WARNING!** The main power to the CTF878 must be disconnected before proceeding.

2. Open the enclosure, remove the main aluminum shroud and locate the J13 header connector (above the display connector) on the main board (see Figure 11 below).
3. Remove the "CONFIG" jumper from the top two pins.

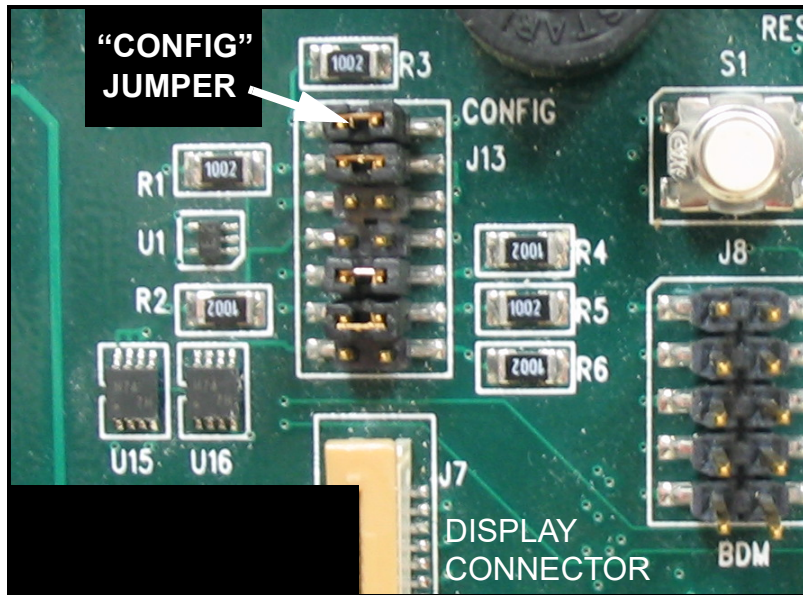


Figure 11: J13 Header Connector

4. Reinstall the shroud, close the cover, and reapply power to the CTF878.

### 2.1.4.2 Setting Up the PC

1. From the Start Menu, click Programs/Accessories/Hyperterminal to open the Hyperterminal window.

**Note:** *If this is the first time that Hyperterminal has been launched, a Location Information window will pop up (see Figure 12 below). Enter any area code, and then click OK.*

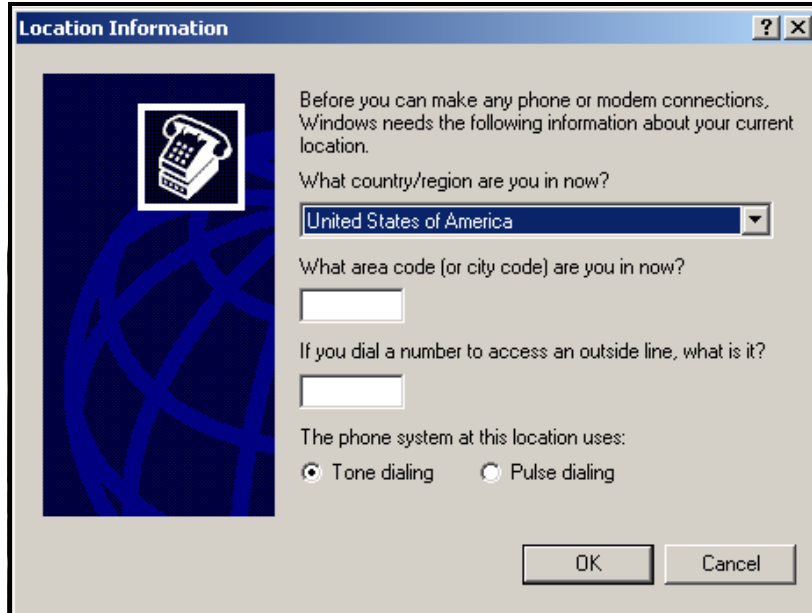


Figure 12: Location Information Window

2. A *New Connection* window appears (see Figure 13 below). Enter a name for the *New Connection*. Click OK.

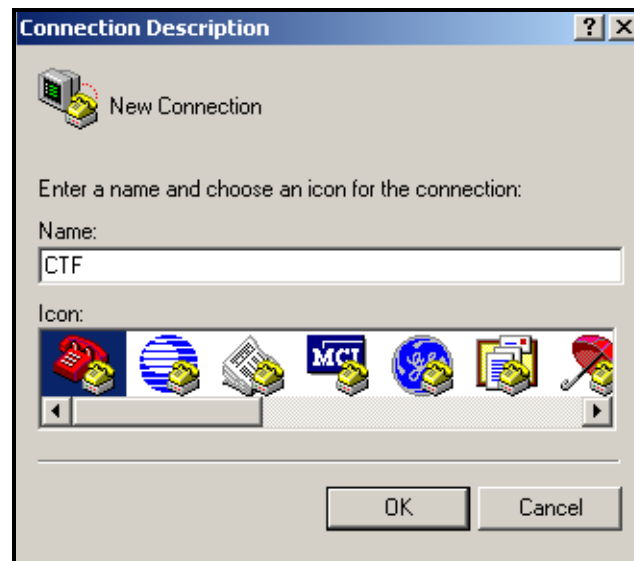


Figure 13: New Connection Window

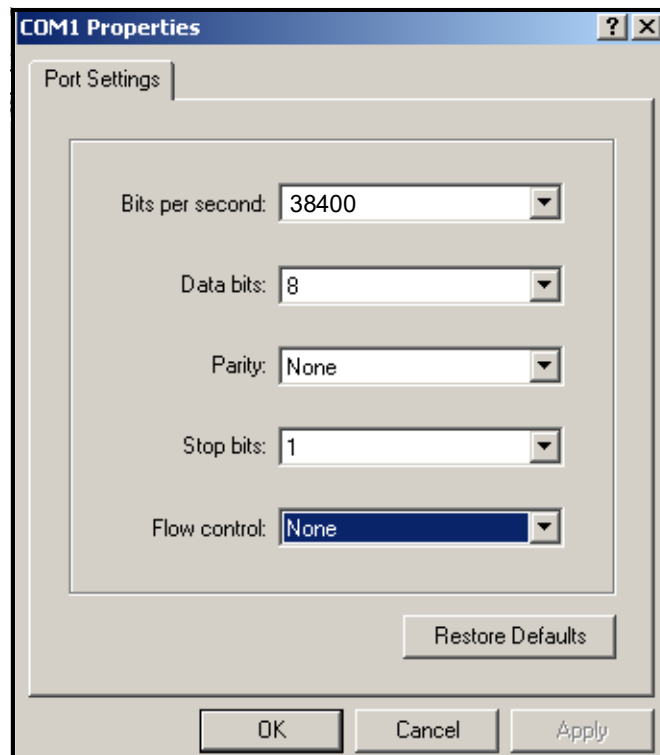
3. A *Connect To* window appears (see Figure 14 below). Under *Connect using* select the correct communication port. Click OK.

**Note:** *COM1* was selected here as an example.



**Figure 14: "Connect To" Window**

4. The *Communication Port Properties* window appears. Enter the settings shown in Figure 15 below. Click OK.



**Figure 15: Communication Port Properties Window**

The CTF878 is now connected to the PC. In the lower left-hand corner of the Hyperterminal window it reads "Connected" with the connection duration (see Figure 16 below).



**IMPORTANT:** If the proper settings are not made, the CTF878 software update will fail.

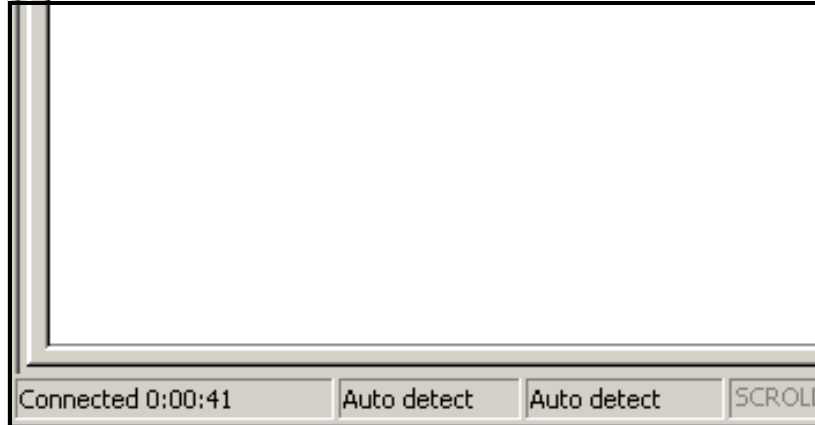


Figure 16: Connected Window

### 2.1.4.3 Installing New Software

To begin the loading procedure, scroll down to the Flash Update entry in the Service Menu and press **[ENTER]**. The screen appears similar to Figure 17 below.

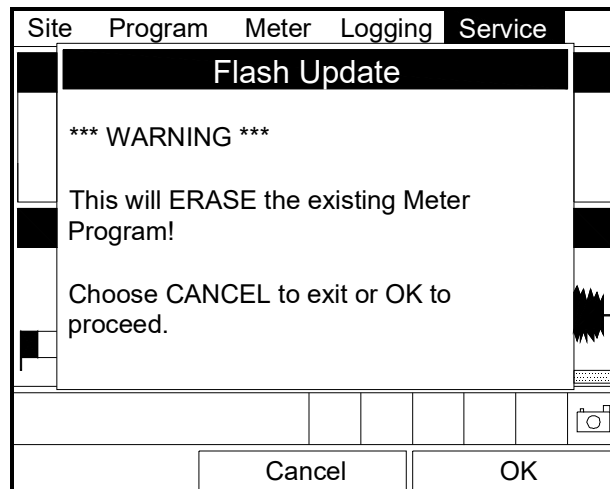


Figure 17: Flash Update Option

1. As shown in Figure 17 above, the Flash Update option erases all instrument coding.
  - Press **[F2]** (Cancel) to return to Operate Mode without erasing the program.
  - Press **[F3]** (OK) to confirm that you wish to erase the program.
2. The meter asks for confirmation. Repeat the options shown in Step 1 above. The screens on both the PC and the CTF878 now appear similar to Figure 18 below.

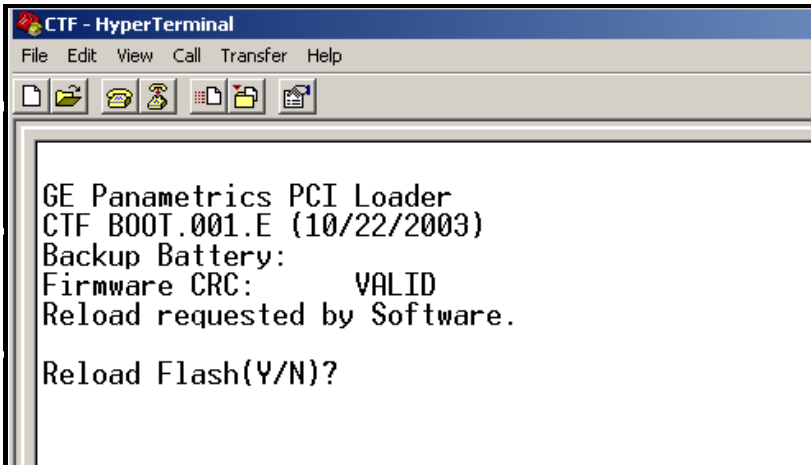


Figure 18: Flash Reloading Window

3. The meter now asks if you wish to reload the flash memory.
  - Press **[F3]** (Yes) (or Y on the PC keyboard twice) to begin reloading, or
  - Press **[F2]** (No) (or ESC on the keyboard) to stop the reloading procedure.
4. If you chose to reload flash, a message appears as in Figure 19 below. On the PC in the Hyperterminal Window, select the "Send File" entry under "Transfer."

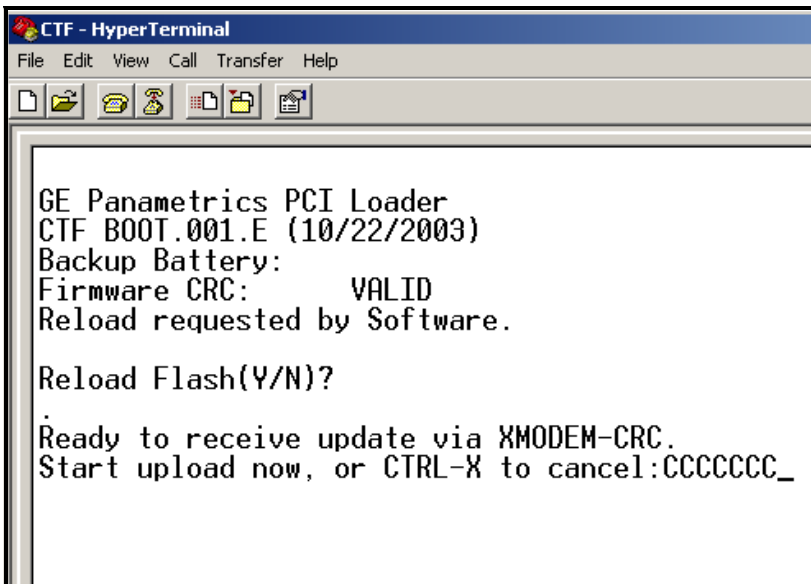


Figure 19: "Ready To Receive Update" Window

5. The "Send File" window appears (see Figure 20 below). Select the replacement software (designated by a .cod extension) from the folder where it has been stored.

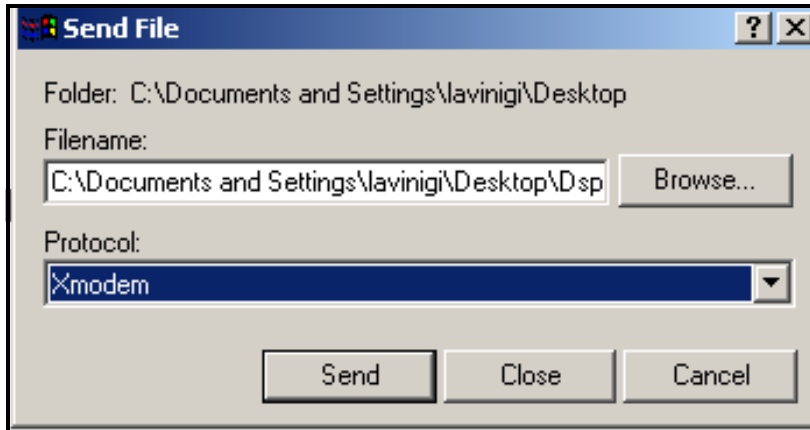


Figure 20: "Send File" Window

- From the protocol drop-down menu, select "Xmodem." The software update now begins as the "Xmodem file send" appears (see Figure 21 below).

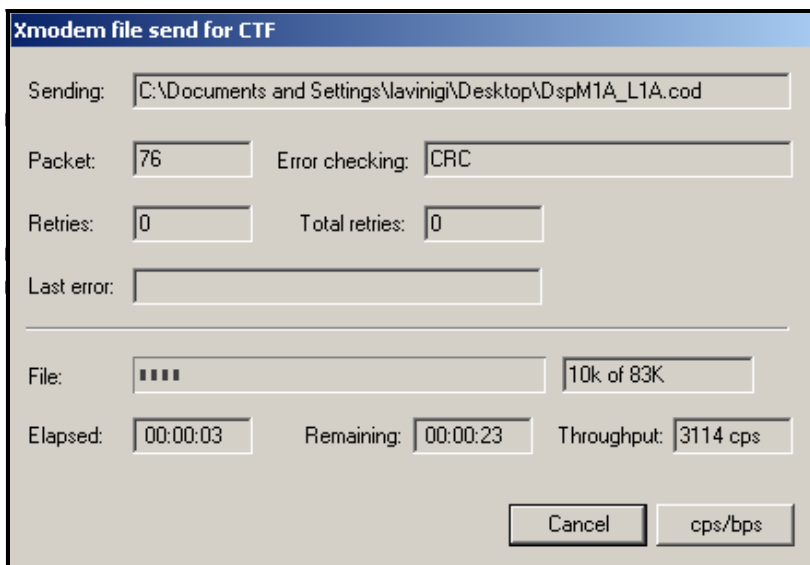
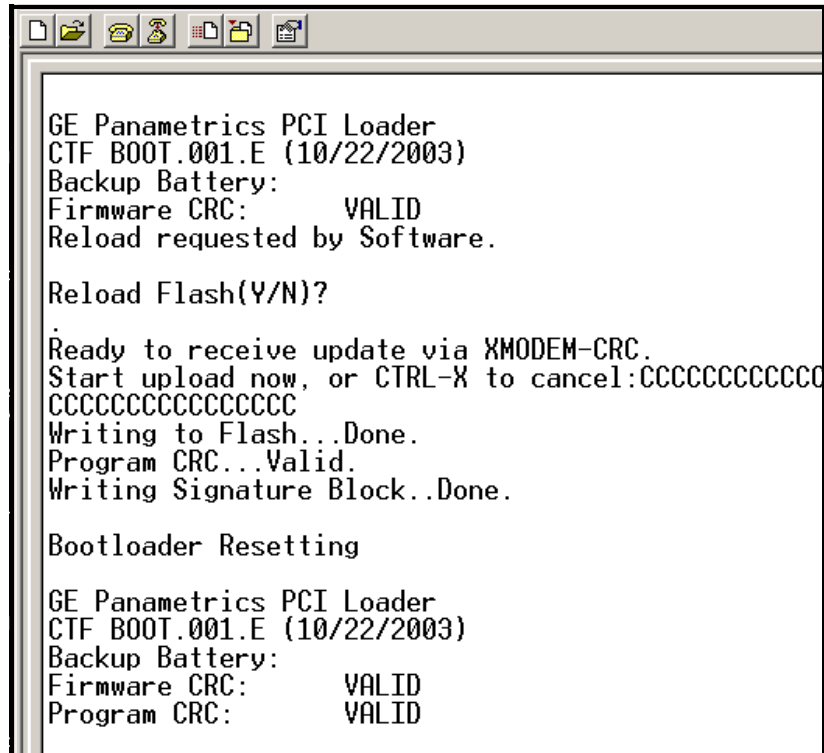


Figure 21: "Xmodem File Send" Window

7. After the update is done, the "Final Window" appears as the CTF878 reboots (see Figure 22 below).



```
GE Panametrics PCI Loader
CTF BOOT.001.E (10/22/2003)
Backup Battery:
Firmware CRC:    VALID
Reload requested by Software.

Reload Flash(Y/N)?
.
Ready to receive update via XMODEM-CRC.
Start upload now, or CTRL-X to cancel:CCCCCCCCCCCC
CCCCCCCCCCCCCCCC
Writing to Flash...Done.
Program CRC...Valid.
Writing Signature Block..Done.

Bootloader Resetting

GE Panametrics PCI Loader
CTF BOOT.001.E (10/22/2003)
Backup Battery:
Firmware CRC:    VALID
Program CRC:     VALID
```

Figure 22: Final Window

#### 2.1.4.4 Completion

When the transfer is complete, to prepare the CTF878 for operation:

1. Disconnect the power to the CTF878.

**WARNING!** The main power to the CTF878 must be disconnected before proceeding.

2. Open the enclosure, remove the main aluminum shroud and locate the J13 header connector (above the display connector) on the main board (see Figure 11 on page 12).
3. Reinstall the "CONFIG" jumper on the top two pins.
4. Reinstall the shroud, close the cover, and reapply power to the CTF878.

## Chapter 3.

### 3.1 Calibration

#### 3.1.1 Introduction

For user convenience, the CTF878 offers a Calibration/Test Menu. This menu enables users to perform a variety of functions that might occasionally be required to calibrate the CTF878.

Refer to the Service Menu Map, Figure 1-1 on page 11, while moving through the following procedures.

#### 3.1.2 Entering the Calibration/Test Menu

Enter the Service Menu as described on page 1-1, then select the Calibrate/Test option. The screen appears similar to Figure 23 below.

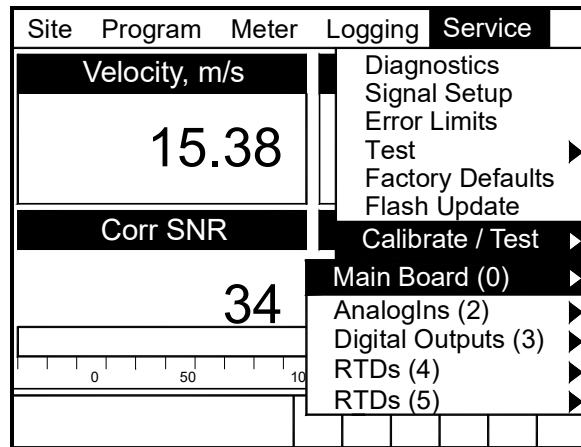


Figure 23: Calibrate/Test Menu

To scroll to a particular option, press the [▼] or [▲] arrow keys until you reach the option. Then press [ENTER] to open the option window.

When entering parameters in an option, press:

- the [▼] key to step through the available parameters.
- the [▲] key to scroll back to a previously entered parameter.
- the [F2] key (Cancel) or the [ESC] key to exit an option at any time and return to Operate Mode without changing the parameters.

### 3.1.3 Testing and Calibrating Analog Outputs

The Calibration/Test option can be used to test and calibrate the analog outputs. To enter the option, scroll to the Main Board or to an AnalogOut option under the Calibrate / Test Menu and press [ENTER]. The screen appears similar to Figure 24 below.

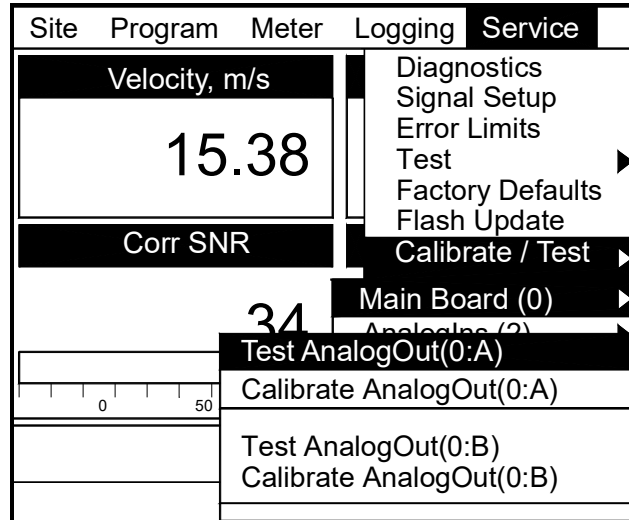


Figure 24: Analog Outputs Test / Calibration Window

#### 3.1.3.1 Testing Analog Outputs

To test an Analog Output, you must connect a digital multimeter to the analog output. Proceeding as above, select the Test AnalogOut option (see Figure 24 above) for the Analog Output to be tested, and press [ENTER]. A clock appears in the middle of the screen with the message "TESTING IO" below it, while the multimeter is displaying the test current output. The test current output value should go through the full range. When the test is complete, the screen returns to Operate Mode.

Repeat the process to test additional Analog Outputs.

#### 3.1.3.2 Calibrating Analog Outputs

The Analog Output calibration procedure consists of calibrating the analog output zero point (0 or 4 mA) and then calibrating the full scale point (20 mA). First you will enter the setpoint, and then the actual value derived from an ammeter or digital voltmeter. The analog outputs have a resolution of  $\pm 5.0 \mu\text{A}$ .

To calibrate an Analog Output, proceed as above, select the desired Calibrate AnalogOut option, and press [ENTER]. The screen appears as shown in Figure 25 on page 21. Proceed as follows:

1. Connect a digital multimeter to the analog output and step through the options using the arrow keys.

**Calibrate AnalogOut(0:A)**

Set Point

4 mA       20 mA

Actual 4 mA      Actual 20 mA

---

**Figure 25: Calibrate Analog Output Window**

2. The first prompt asks for the setpoint (4 or 20 mA). Use the [◀] and [▶] arrow keys to move to the appropriate radio button and press [ENTER].
3. The next prompt asks you to enter the actual value shown on the multimeter or ammeter.
  - a. Press [ENTER] to open the text box.
  - b. Use the numeric keys to enter the value shown on the multimeter.
  - c. Press [ENTER] to confirm your entry.
  - d. Scroll to “Calibrate”, then press [ENTER]. That setpoint has been calibrated.
4. Repeat steps 2 and 3 for the other setpoint.

If you are unsatisfied with the calibration, you can reset the inputs to factory defaults. Press the [▶] arrow key to move to the Reset box, and then press [ENTER] to undo the calibration.

You have completed calibrating the outputs. To leave the Output window,

- Press [F2] (Cancel) to return to Operate Mode without confirming the changes.
- Press [F3] (OK) to confirm the new data. The CTF878 returns to Operate Mode.

### 3.1.4 Testing and Calibrating Analog Inputs

The Calibration/Test option can be used to test and calibrate the analog inputs. To enter the option, scroll to the AnalogIns option under the Calibrate/Test Menu and press [ENTER]. The screen appears similar to Figure 24 on page 20.

#### 3.1.4.1 Testing Analog Inputs

To test an Analog Input, you must connect a current source to the analog input. Proceeding as above, select the Test AnalogIn option for the Analog In to be tested, and press [ENTER]. The screen appears as in Figure 26 below. It displays the analog input current RAW count from the A/D. When the input current changes, you can press [F3] (OK) to update the RAW count or [F2] (Cancel) to exit.

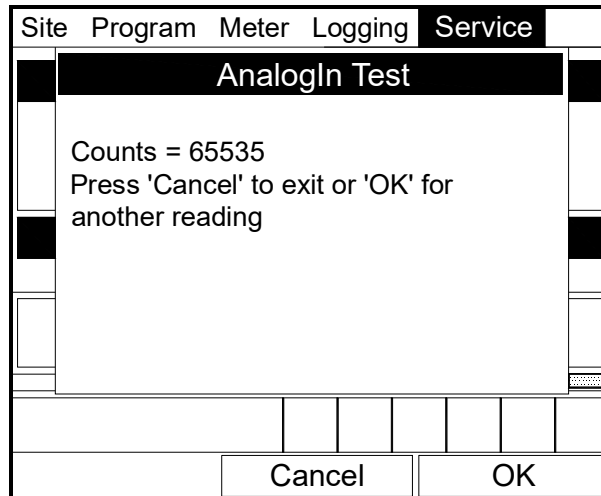


Figure 26: AnalogIn Test Window

If you pressed [F3] (OK), a clock appears in the middle of the screen with the message "TESTING IO" below it. When the test is complete, the screen returns to Operate Mode.

Repeat the process to test additional Analog Inputs.



### 3.1.4.2 Calibrating Analog Inputs

The Analog Input calibration procedure consists of calibrating the analog input zero point (0 or 4 mA) and the full scale point (20 mA).

**Note:** *Calibrating analog inputs requires use of a current source. Calibrated analog outputs may be used as a current source.*

To calibrate an Analog Input, proceed as above, select the desired Calibrate AnalogIn option, and press [ENTER]. The screen appears as in Figure 27 below. Step through the options using the arrow keys.

Calibrate Analog Input	
Low	4 mA <span style="float: right;">Read</span>
High	20 mA <span style="float: right;">Read</span>
<span>Calibrate</span> <span>Reset</span>	
<span>Cancel</span> <span>OK</span>	

**Figure 27: Calibrate Analog Input Window**

1. The first prompt asks you to set the low input (0 or 4 mA).
  - a. Press [ENTER] to open the text box.
  - b. Use the numeric keys to enter the desired value.
  - c. Press [ENTER] to confirm your entry.
2. Set the current source to output the current for the Low point (0 or 4mA).
  - a. Press the [▶] arrow key to move to the Read box and press [ENTER].
  - b. Scroll to the Calibrate box and press [ENTER] to calibrate the low point.
3. The next prompt asks for the value to which you want to set the high input (20 mA).
  - a. Press [ENTER] to open the text box.
  - b. Use the numeric keys to enter the desired value.
  - c. Press [ENTER] to confirm your entry.
4. Set the current source to output the current for the High point (20 mA).
  - a. Press the [▶] arrow key to move to the Read box and press [ENTER].
  - b. Scroll to the Calibrate box and press [ENTER] to calibrate the high point.
5. If you are unsatisfied with the calibration, you can reset the inputs to factory defaults. Press the [▶] arrow key to move to the Reset box, and then press [ENTER] to undo the calibration.

You have completed calibrating the inputs. To leave the Inputs window,

- Press [F2] (Cancel) to return to Operate Mode without confirming the changes.
- Press [F3] (OK) to confirm the new data. The CTF878 returns to Operate Mode.

Repeat the process to calibrate additional Analog Inputs.

### 3.1.5 Testing and Calibrating Digital Outputs

The Calibration/Test option can be used to test and calibrate (verify the accuracy of) the digital outputs. To enter the option, scroll to the Digital Outputs option under the Calibrate/Test Menu and press **[ENTER]**. The screen appears similar to Figure 24 on page 20.

#### 3.1.5.1 Testing Digital Outputs

To test a Digital Output, you must connect a frequency counter to the digital output. Proceeding as above, select the option for the Digital Output to be tested, and press **[ENTER]**. A clock appears in the middle of the screen with the message "TESTING IO" below it while the frequency counter is displaying the test frequency output. The test frequency output should be a sweep from the low point to the high point. When the test is complete, the screen returns to Operate Mode.

Repeat the process to test additional Digital Outputs.

#### 3.1.5.2 Calibrating (verifying the accuracy of) Digital Outputs

To verify the accuracy of a Digital Output, you must connect a frequency counter to the digital output. Proceeding as above, select the desired option for the Digital Output to be verified, and press **[ENTER]**. The screen appears as in Figure 28 below. Step through options using the arrow keys.

Totalizer/Frequency 3:0			
Freq	<input type="text" value="1000"/>	Hz	<input type="button" value="SET"/>
Total	<input type="text" value="50"/>	Pulses	<input type="button" value="SET"/>
			<input type="button" value="Exit"/>

Figure 28: Calibrate Digital Outputs Window

To verify the accuracy of a digital output using the frequency, follow these instructions:

1. The first prompt asks you to enter the frequency.
  - a. Press **[ENTER]** to open the text box.
  - b. Use the numeric keys to enter the desired value.
  - c. Press **[ENTER]** to confirm your entry.
2. Press the **[▶]** arrow key to move to the SET box, and then press **[ENTER]** to set the frequency value entered.
3. Compare the value entered with the reading on the frequency counter. They should be very close (within  $\pm 1$  Hz for frequencies below 1 KHz).

To verify the accuracy of the digital output using the totalizer, follow these instructions:

4. The next prompt asks you to enter the total number of pulses.
  - a. Press **[ENTER]** to open the text box.
  - b. Use the numeric keys to enter the desired value.
  - c. Press **[ENTER]** to confirm your entry.
5. Press the **[▶]** arrow key to move to the SET box, and then press **[ENTER]** to set the number of pulses.
6. Compare the value entered with the reading on the frequency counter. They should be very close (within  $\pm 1$  Hz for frequencies below 1 KHz).

You have verified the accuracy of the digital outputs. To leave the Totlizer/Frequency window, press [F3] to exit. The CTF878 returns to Operate Mode.

Repeat the process to verify the accuracy of additional Digital Outputs.

### 3.1.6 Testing and Calibrating RTD's

The Calibration/Test option can be used to test and calibrate RTD's. To enter the option, scroll to the RTDs option under the Calibrate/Test Menu and press [ENTER]. The screen appears similar to Figure 24 on page 20.

#### 3.1.6.1 Testing RTD's

To test an RTD, you must connect an RTD to the RTD board. Proceeding as above, select the Test RTD option for the RTD to be tested, and press [ENTER]. A clock appears in the middle of the screen with the message "TESTING IO" below it. This is followed immediately by a screen similar to Figure 30 below.

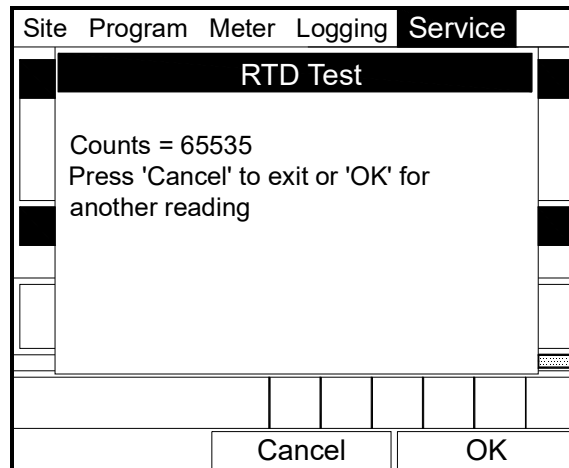


Figure 29: RTD Test Window

**Note:** The window shows a count dependent on the output from the RTD. When the output from the RTD changes, you can press [F3] (OK) to update the count or [F2] (Cancel) to exit.

When the test is complete, press [F2] (Cancel) and the screen returns to Operate Mode. Repeat the process to test additional RTD's.

#### 3.1.6.2 Calibrating RTD's

The RTD calibration procedure consists of setting the low and high temperature readings.

To calibrate an RTD you must connect an RTD to the RTD board. Proceeding as above, select the desired Calibrate RTD option, and press [ENTER]. The screen appears as in Figure 30 below. Step through options using the arrow keys.

Calibrate RTD			
Low	<input type="text" value="0"/>	C	<input type="button" value="Read"/>
High	<input type="text" value="100"/>	C	<input type="button" value="Read"/>
<input type="button" value="Calibrate"/>		<input type="button" value="Reset"/>	
<input type="button" value="Cancel"/>		<input type="button" value="OK"/>	

Figure 30: RTD Calibration Window

1. The first prompt asks you to set the low temperature.
  - a. Press **[ENTER]** to open the text box.
  - b. Use the numeric keys to enter the desired value.
  - c. Press **[ENTER]** to confirm your entry.
2. Press the **[▶]** arrow key to move to the Read box, and then press **[ENTER]** to read the low temperature.
3. Scroll to the Calibrate box and press **[ENTER]**. The low point has been calibrated.
4. The next prompt asks for the value to which you want to set the high temperature.
  - a. Press **[ENTER]** to open the text box.
  - b. Use the numeric keys to enter the desired value.
  - c. Press **[ENTER]** to confirm your entry.
5. Press the **[▶]** arrow key to move to the Read box, and then press **[ENTER]** to read the high temperature.
6. Scroll to the Calibrate box and press **[ENTER]**. The high point has been calibrated.
7. If you are unsatisfied with the calibration, you can reset the temperatures to factory defaults. Press the **[▶]** arrow key to move to the Reset box, and then press **[ENTER]** to undo the calibration.

You have completed calibrating the inputs. To leave the Calibrate RTD window,

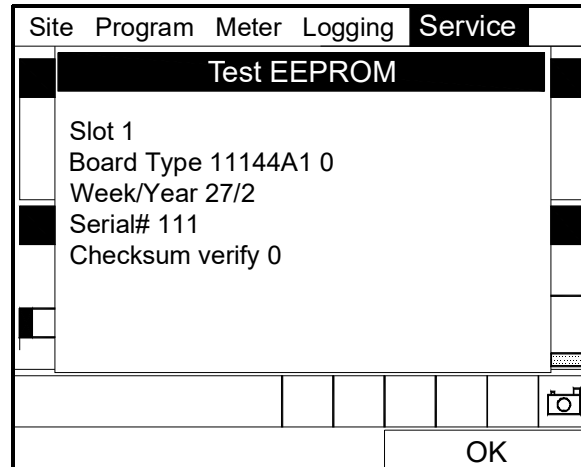
- Press **[F2]** (Cancel) to return to Operate Mode without confirming the changes.
- Press **[F3]** (OK) to confirm the new data. The CTF878 returns to Operate Mode.

Repeat the process to calibrate additional RTD's.

### 3.1.7 Testing EEPROM's

To check the EEPROM on each option card, scroll to the Test EEPROM option under the Service menu, and press **[ENTER]**. The screen appears similar to Figure 31 below. This is information regarding the option card located in Slot 1.

**Note:** Option card slots are numbered from right to left.



**Figure 31: EEPROM Test Window**

Press [ENTER] or [F3] (OK) repeatedly to check each EEPROM by observing the information for the corresponding option card.

When the Test EEPROM information has appeared for every option card present, the screen returns to the Operate Mode.

[no content intended for this page]

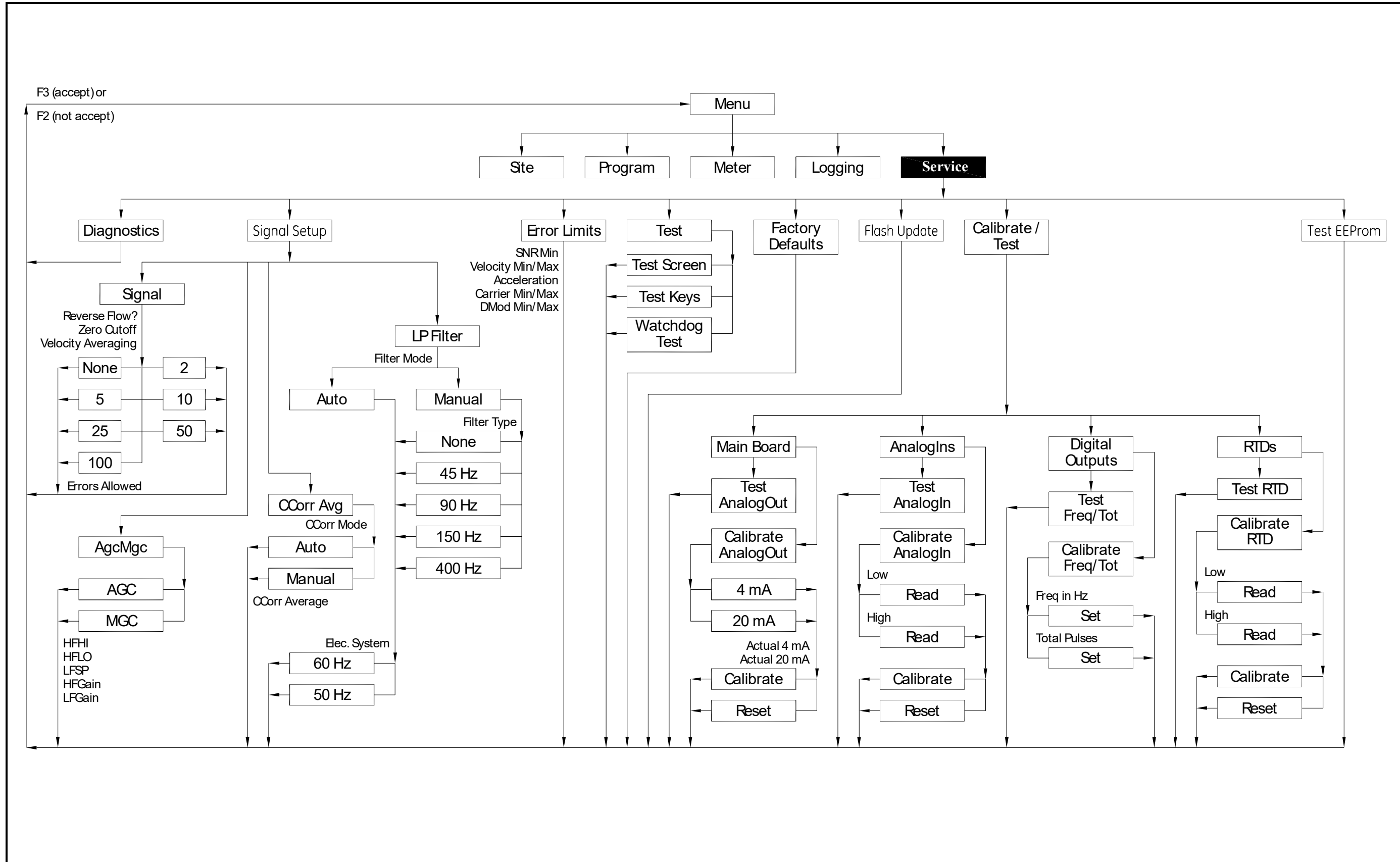


Figure 32: Service Menu Map





---

## Chapter 4.

### 4.1 Troubleshooting

#### 4.1.1 Introduction

The CTF878 is a reliable instrument that is easy to maintain. It will provide accurate flow measurement readings as long as it is operated as described in this manual. If problems do arise with the electronics, the pipe, the fluid, or the transducers, the CTF878 displays an error message specifying the possible problem. The CTF878 also has a set of diagnostic parameters to help you find and remedy the problem.

In general, troubleshooting may be necessary if the CTF878 displays an error message, the flow readings are erratic, or you have other reasons to doubt the accuracy of readings (for example, readings do not agree with other flow measuring devices connected to the same process).

This section describes error messages and diagnostic parameters, and shows you how to isolate problems to one of the following areas:

- Electronics, including programmed values
- Pipe and fluid
- Transducers and cables.

#### 4.1.2 Error Code Messages

Error Code messages appear on the screen while you are displaying measurements. When logs appear in graph form, errors are indicated by a vertical gray bar at the point of error. When they appear in a spreadsheet format, errors are indicated by their number, in place of the measurement. The Error Code messages are only general descriptions of the possible problems. Use Table 4 on page 4 to isolate and remedy the problem. If you are unable to remedy the problem, contact the factory.

Error	Problem	Possible Cause	Action
E0	No error	Displays briefly after display of another error message	None required. Measurement is valid.
E1	Receiver Board Error	FPGA not loaded, etc.	Power CTF878 down. Remove shroud. Make sure receiver board is seated correctly and its screws are on tight. Power up. Contact factory if problem persists.
E2	DSP Error	Acknowledgement not received after program is loaded; or checksum error.	Power CTF878 down. Remove shroud. Make sure DSP board is seated correctly and its screws are on tight. Power up. Contact factory if problem persists.
E3	DSP Timeout Error	DSP board not seated correctly; or corrupted code.	Power CTF878 down. Remove shroud. Make sure DSP board is seated correctly and its screws are on tight. Power up. Contact factory if problem persists.
E4	Carrier Underrange Error	Broken cable. Pipe/Fluid problem. Transducer problem. Electronic failure.	Check transducer cables. See <i>Pipe/Fluid Problems</i> on page 34 and <i>Transducer Problems</i> on page 34. Contact factory if problem persists.
E5	Carrier Overrange Error	Gas composition.	Power CTF878 down. Open receivers' GUAL boxes. Disconnect preamplifiers from transducers and from receiving cables. Connect transducers directly to receiving cables. Switch preamplifiers' power jumper to OFF position. Power up. Contact factory if problem persists.
E6	Modulation Underrange Error	Poor flow conditions	See <i>Pipe/Fluid Problems</i> on page 34 and <i>Transducer Problems</i> on page 34. Contact factory if problem persists.
E7	Modulation Overrange Error	Gas composition.	Power CTF878 down. Open receivers' GUAL boxes. Disconnect preamplifiers from transducers and from receiving cables. Connect transducers directly to receiving cables. Switch preamplifiers' power jumper to OFF position. Power up. Contact factory if problem persists.
E8	SNR Error	Poor flow conditions.	Check the programming (transducer, pipe, fluid, path) and transducer setup. If they are correct and in agreement, make sure that the transducers are well coupled to the pipe. Contact factory if problem persists.
E9	Velocity Range Error	Incorrect TAG Path. Incorrect Velocity Error Limits. Poor flow conditions.	Check TAG Path under Program > Path. Check Velocity Error Limits under Service > Error Limits. Contact factory if problem persists.
E10	Acceleration Error	Incorrect Acceleration Error Limit. Poor flow conditions.	Check acceleration error limit under Service > Error Limits. Contact factory if problem persists.
<b>Note:</b> When errors E4 through E10 occur consistently, the first action to take is to check the programming (transducer, pipe, fluid, path) and the transducer setup. If they are correct and in agreement, make sure that the transducers are well coupled to the pipe.			

### 4.1.3 Displaying Diagnostic Parameters

As part of its measurement menu, the CTF878 offers a list of diagnostic parameters to aid in troubleshooting in the event of flowcell, transducer, or electrical problems. You can select any diagnostic parameter for display as a measurement (see *Displaying and Configuring Data*, Chapter 2 of the *Programming Manual* or Chapter 4 of the *Startup Guide*). Table 4 below shows all the available diagnostic parameters and ranges.

Diagnostic Parameter	Displays	Good	Bad
Carrier Amplitude Up	The peak voltage amplitude (millivolts) of the upstream channel received signal before demodulation.	75–1100mV	< 75mV or > 1100mV
Carrier Amplitude Dn	The peak voltage amplitude (millivolts) of the downstream channel received signal before demodulation.	75–1100mV	< 75mV or > 1100mV
Carrier Gain Up	The gain of the variable stage of the upstream channel received signal.	–6 to +31dB	---
Carrier Gain Dn	The gain of the variable stage of the downstream channel received signal.	–6 to +31dB	---
I Amplitude Up	The RMS voltage amplitude (millivolts) of the upstream channel demodulated signal I*.	295–1180mV	< 295mV or > 1180mV
I Amplitude Dn	The RMS voltage amplitude (millivolts) of the downstream channel demodulated signal I*.	295–1180mV	< 295mV or > 1180mV
Q Amplitude Up	The RMS voltage amplitude (millivolts) of the upstream channel demodulated signal Q*.	295–1180mV	< 295mV or > 1180mV
Q Amplitude Dn	The RMS voltage amplitude (millivolts) of the downstream channel demodulated signal Q*.	295–1180mV	< 295mV or > 1180mV
Modulation Gain Up	The gain of the variable stage of the upstream channel demodulated signals I and Q*.	–16 to +31dB	---
Modulation Gain Dn	The gain of the variable stage of downstream channel demodulated signals I and Q*.	–16 to +31dB	---
Tau	The time it takes for fluids to move from the upstream channel to the downstream channel.	N/A	N/A
Correlation SNR	The Correlation Signal-to-Noise Ratio.	> 10	< 10

\* Signals I and Q are those modulated carrier waves which have been converted (demodulated) into a current equivalent to the original signal.

#### 4.1.4 Pipe/Fluid Problems

If preliminary troubleshooting with the *Error Code Messages* and/or the *Diagnostic Menu* indicates a possible pipe/fluid problem, proceed with this section. Pipe/fluid problems fall into two categories:

- gas problems
- pipe problems.

Read the following sections carefully to determine if the problem is indeed related to the pipe/fluid. If the instructions in this section fail to resolve the problem, contact the factory for assistance.

##### 4.1.4.1 Gas Problems

Most gas-related problems result from a failure to observe the flowmeter system installation instructions. Refer to *Installation*, Chapter 2 of the *Startup Guide*, to correct any installation problems.

If the physical installation of the system meets the recommended specifications, it is possible that the gas itself may be preventing accurate flow rate measurements. The gas being measured must meet the following requirements:

1. *The gas must be homogeneous, single-phase and relatively clean.* Although a low level of entrained particles may have little effect on the operation of the CTF878, excessive amounts of solid or liquid particles will absorb or disperse the ultrasound signals. This interference with the ultrasound transmissions through the gas will cause inaccurate flow rate measurements.
2. *The gas must not excessively attenuate ultrasound signals.* Some gases (i.e., high-purity carbon dioxide, hydrogen, etc.) readily absorb ultrasound energy. In such a case, an **E4 and/or E6** error code message will appear on the display screen to indicate that the ultrasonic signal strength is insufficient for reliable measurements.

##### 4.1.4.2 Pipe Problems

Pipe-related problems may result either from a failure to observe the installation instructions, as described in the *Startup Guide*, or from improper programming of the meter. By far, the most common pipe problems are the following:

1. *The collection of material at the transducer location(s).* Accumulated debris at the transducer location(s) will interfere with transmission of the ultrasound signals. As a result, accurate flow rate measurements are not possible. Realignment of the transducers often cures such problems. Refer to *Installation*, Chapter 2 of the *Startup Guide* for more details on proper installation practices.
2. *Inaccurate pipe measurements.* The accuracy of the flow rate measurements is no better than the accuracy of the programmed pipe dimensions. Measure the pipe wall thickness and diameter with the same accuracy desired in the flow rate readings. Also, check the pipe for dents, eccentricity, weld deformity, straightness and other factors that may cause inaccurate readings. Refer to *Initial Setup*, Chapter 3 in the *Startup Guide* for instructions on programming the pipe data. Also, see *Setting the Transducer Spacing and Tag Path* in Chapter 2 of the *Startup Guide*, for a discussion of this topic.

#### 4.1.5 Transducer Problems

The most common clamp-on transducer problems are listed below:

##### 1. POOR COUPLING TO PIPE

Clamp-on transducers must be in intimate contact with the pipe. The pipe wall must be smooth and generally free of paint. The couplant material must fill voids between the transducer and the pipe, and must be firmly bonded to both the pipe and the transducer. The pipe and transducer must be clean and dry for permanent couplant, such as grease or epoxy, to adhere properly. Enough pressure must be applied to the transducer by its clamp to hold it firmly against the pipe.

##### 2. EXCESS COUPLANT

Clamp-on transducers must be in intimate contact with the pipe. If there is too much couplant, it may prevent the transducer from making that contact.

##### 3. MISALIGNMENT

The transducer transmits relatively narrow beams of ultrasound, and therefore transducer alignment is critical to assure that the beam can travel from one transducer to the other without undue attenuation. Be sure to follow

exactly the instructions that came with your transducers and clamping fixture. Also, be sure that the transducer spacing agrees with the calculated spacing (as a function of soundspeed).

#### 4. INTERNAL DAMAGE

Ultrasonic transducers consist of a ceramic "crystal" bonded to the transducer case. The bond between the crystal and the case may be damaged by extreme shock and by temperature extremes. The crystal itself can also be damaged by the same conditions. The internal wiring can be corroded or shorted if contaminants enter the transducer housing.

#### 5. PHYSICAL DAMAGE

Transducers may be physically damaged by dropping them onto a hard surface or striking them against another object. The connector on the transducer is usually the part that is damaged. Minor damage may be repaired by carefully bending the connector back into shape. If the connector cannot be repaired, replace the transducers. After replacement, the flowmeter parameters should be checked (see *Programming Site Data*, Chapter 1 of the *Programming Manual*, or Chapter 3 of the *Startup Guide*).

Contact the factory if you cannot solve a transducer-related problem.

[no content intended for this page]

## Chapter 5.

### 5.1 Parts Replacement

#### 5.1.1 Introduction

The electronics console of the CTF878 has been designed to permit easy on-site upgrades and parts replacement. See Figure on page 43 and Figure 1-2 on page 11 for details. The instructions in this chapter, along with a few common tools, are all that is required to perform the following tasks:

- fuse replacement
- printed circuit board (PCB) removal and installation
- option card installation
- LCD display replacement

#### **WARNING!**

**Prior to performing any maintenance procedures, be sure to disconnect the main power from the unit.**

**Note:** *For compliance with the European Union's Low Voltage Directive (2006/95/EC), this unit requires an external power disconnect device such as a switch or circuit breaker. The disconnect device must be marked as such, clearly visible, directly accessible, and located within 1.8 m (6 ft) of the CTF878.*

An aluminum shroud over the printed circuit board shields the electrical components and serves as a location for the wiring diagram label. All of the procedures discussed in this chapter, except for fuse replacement, require removal of this shroud.

**Note:** *For compliance with the European Union's Low Voltage Directive (2006/95/EC), a transparent plastic shroud protects the electrical connections. The shroud must remain in place, except while wiring the unit. Reinstall the shroud after the wiring has been completed.*

Use Figure on page 43 and Figure 1-2 on page 11 to locate the relevant components, while completing the following procedures.

**IMPORTANT:** Keep a detailed record all service procedures performed on the CTF878 in Appendix A, Service Record. This service history may prove very helpful in diagnosing any future problems.

## 5.1.2 Replacing the Fuse

If it has been determined that the fuse in the CTF878 requires replacement, complete the following steps:

### **WARNING!**

**The main power to the CTF878 must be disconnected before proceeding.**

1. Open the cover on the electronics console. Remove the two mounting screws and lift the clear plastic shroud out of the electronics console.
2. Locate the black plastic fuse holder that is mounted on the printed circuit board between the power terminal block TB1 and the **RS232** terminal block. As shown in Figure on page 43, the fuse holder extends below the main aluminum shroud, and the fuse holder cap is located on the bottom of the fuse holder.
3. Using a small standard screwdriver, turn the fuse holder cap counterclockwise about 1/4 turn. The fuse holder cap, with the captive fuse, will be ejected from the fuse holder.
4. Replace the defective fuse with a new one of the same rating and type. Use only 1-1/4" x 1/4" Slo-Blo fuses, having a rating as indicated in Table 1 below and on the wiring diagram label.

**Table 1: Line Voltage & Fuse Rating**

Line Voltage	Fuse Rating
85-264 VAC	1.0 A, Slo-Blo

5. Press the new fuse into the fuse holder cap and insert the fuse into the fuse holder. While applying a slight pressure with the screwdriver, twist the fuse holder cap 1/4" turn clockwise.
6. Place the clear plastic shroud over the standoffs in the electronics console and secure it in place with its two mounting screws. Close the cover on the electronics console.

The CTF878 flowmeter may now be placed back into service. Reconnect the main power and resume taking measurements.

**Note:** *Be sure to record the fuse replacement in Appendix A, Service Record.*



### 5.1.3 Removing the Printed Circuit Board

Some of the maintenance procedures require removal of the printed circuit board. To accomplish this, refer to Figure on page 43 and Figure 1-2 on page 11 while completing the following tasks:

1. Remove the main power to the electronics console.

**WARNING!** The main power to the CTF878 must be disconnected before proceeding.

2. Open the electronics console. Remove the two mounting screws and lift the clear plastic shroud out of the electronics console. Remove the five mounting screws and lift the main aluminum shroud out of the electronics console.
3. Disconnect the main power leads from terminal block **TB1** on the printed circuit board. Remove the electrical connections from all installed option cards and terminal blocks. Disconnect the twisted-pair backlight cable from connector **J6**, the two striped-ribbon keyboard cables from connector **J5**, and the white-ribbon display cable from connector **J7**.
4. Using a Phillips screwdriver and a 3/8 inch nutdriver or open-end wrench, remove the three mounting screws (just left of center) and the five standoffs along the sides of the main circuit board.
5. While supporting the printed circuit board, remove the two standoffs along the bottom edge of the printed circuit board.
6. Carefully lift the printed circuit board out of the enclosure.

**CAUTION!** During this procedure, be very careful not to damage the upright components along the top edge of the printed circuit board. Severe or repeated bending of these components will break their leads.

7. The printed circuit board is now free and may be removed to a clean work area.

If the printed circuit board is being replaced, proceed to the section *Installing the Printed Circuit Board* on page 41. Otherwise, refer to *Installing an Option Card* on page 40.

### 5.1.4 Installing an Option Card

The CTF878 flowmeter can accommodate up to six option cards. The option cards are installed into sockets on the rear of the printed circuit board, and they are held in place with a metal bracket. A single metal bracket is used to secure all the installed option cards.

**Note:** *If the CTF878 presently has no option cards installed, be sure to purchase the metal mounting bracket along with the first option card.*

To install an option card, refer to Figure on page 43 and Figure 1-2 on page 11, and complete the following steps:

1. Remove the printed circuit board, as described on page 39.
2. Place the printed circuit board face down on a clean, flat surface.
3. If one or more option cards are already installed, remove the four fasteners that secure the metal bracket to the printed circuit board. Lift the metal bracket straight up and away from the printed circuit board.

**Note:** *The fasteners may be discarded, as new plastic snap rivets will be provided.*

4. There are six 32-pin option card sockets (**J41–J46**) on the rear of the printed circuit board. To install an option card, insert its 32-pin connector into any available option card socket and gently press the card into place. Make sure that the pins in the connector are straight and properly aligned with the socket and that the connector is positioned on the right side of the option card.

**CAUTION!** **Do not force the option card into the socket. If the card does not enter the socket easily, check for and straighten any bent pins in the connector and try again.**

5. Repeat step 4 to install any additional option cards.
6. Place the metal bracket over the option cards, making sure that all option cards are aligned with the plastic card guides in the bracket. Secure the metal bracket to the printed circuit board with the snap rivets provided. See the installed assembly in Figure on page 43 and Figure 1-2 on page 11.

Complete the option card installation by proceeding to *Installing the Printed Circuit Board* on page 41.

### 5.1.5 Installing the Printed Circuit Board

Whether the printed circuit board was removed for replacement or for one of the other procedures discussed in this chapter, reinstallation of the printed circuit board is the final step in the process. Refer to Figure on page 43 and Figure 1-2 on page 11, and complete the following steps:

**CAUTION!**

**During this procedure, be very careful not to damage the vertical components along the top edge of the printed circuit board. Severe or repeated bending of these components will break their leads.**

1. Carefully position the printed circuit board within the electronics console, up against the nine standoffs in the enclosure. Do not damage the transformers and any installed option cards as they are maneuvered between the standoffs.
2. Loosely install the three standoffs on the right side of the printed circuit board and the two standoffs along the bottom edge. Then, install the two mounting screws (just left of center) and the top and bottom standoffs on the left side.
3. Securely tighten all nine standoffs and/or screws.
4. Connect the twisted-pair backlight cable to socket **J6**. This plug is polarized so that it can only be installed in the proper orientation, with the black wire above the red wire.
5. Connect the keyboard cable to socket **J5** and the display cable to socket **J7**.
6. Check for and remove any loose hardware that may have fallen into the electronics console during the maintenance procedure.
7. Place the main shroud over the five upper standoffs on the printed circuit board. Making sure that the shroud is oriented with the wiring diagram label upright, fasten the shroud to the standoffs with the five sets of screws and washers.
8. Reconnect the power line wires to terminal block **TB1** on the printed circuit board. Plug all other electrical connectors into the appropriate sockets on the printed circuit board and option cards. See *Installation*, Chapter 2 of the *Startup Guide* for instructions on proper wiring of the CTF878.
9. Position the clear plastic LVD shroud over the electrical connections so that the two holes in the shroud align with the standoffs on the printed circuit board. Secure the shroud to the standoffs with the two sets of screws and washers.
10. After carefully checking for and removing any loose hardware in the enclosure, close the electronics console and reconnect the main power to the CTF878.

**Note:** *For compliance with the European Union's Low Voltage Directive (2006/95/EC), this unit requires an external power disconnect device such as a switch or circuit breaker. The disconnect device must be marked as such, clearly visible, directly accessible, and located within 1.8 m (6 ft) of the CTF878.*

Before taking measurements with the CTF878, refer to *Initial Setup*, Chapter 3 in the *Startup Guide*, and to *Calibration*, Chapter 3 in this *Service Manual*, for instructions on properly setting up the meter for accurate flow rate measurements.

**Note:** *Be sure to enter a complete and detailed account of the service procedure performed on the CTF878 in Appendix A, Service Record.*

### 5.1.6 Replacing the LCD Display

The CTF878's measurements are displayed on a two-pane LCD graphic display panel. The LCD display normally provides years of dependable service, but it is easily field-replaceable when necessary. To replace the LCD display, see Figure on page 43 for the component locations, and complete the following steps:

**WARNING!**

**The main power to the CTF878 must be disconnected before proceeding.**

1. Open the cover on the electronics console.
2. Disconnect the white-ribbon display cable from connector J7, open the two cable brackets (inside the enclosure and on the inside surface of the cover), and free the display cable. See Figure 1-2 on page 11.
3. Using a 3/16 inch nutdriver, remove the four nut/washer sets that secure the display shroud to the inside of the console cover. Lift the display shroud off its mounting studs.
4. Using a 1/4" nutdriver, remove the four standoffs that secure the LCD display assembly to the console cover. Lift the LCD display assembly off its mounting studs.
5. Place the new LCD display assembly over the mounting studs on the console cover (in the same orientation as the one being replaced) and secure it with the four standoffs.

**CAUTION!** Do not overtighten the standoffs or the display assembly may be damaged.

6. Install the display shroud over the mounting studs with the bent edges on the top and bottom extending toward the cover.
7. Fasten the display shroud to the console cover with the four sets of nuts and washers.

**CAUTION!** Do not overtighten the nuts or the mounting threads may be damaged.

8. Feed the white-ribbon display cable through the cable brackets, close the brackets, and connect the cable to connector J7.

### 5.1.7 Spare Parts

All of the necessary components to upgrade or repair the CTF878 flowmeter are readily available from Panametrics Sensing. As a convenient reference, some of the more common spare parts are listed in Table 2 below.

**Table 2: Spare Parts List**

Part Number	Description
703-1127-02	Option Card - Alarms, Hermetically Sealed
703-1127-03	Option Card - Alarms, General Purpose
703-1144-02	Option Card - Totalizer/Frequency Outputs
703-1145-02	Option Card - Analog Inputs
703-1145-03	Option Card - RTD Inputs
421-1479	Card Cage (Metal Bracket)
417-027	Card Guide, Nylon
703-1344-01	Main Printed Circuit Board, Standard
703-1344-02	Main Printed Circuit Board, RS485
705-1036	LCD Display Assembly
421-700	Conduit Plate, 1/2"
421-701	Conduit Plate, 3/4"
421-702	Conduit Plate, Blank
421-1490	Clear Plastic LVD Shroud
421-1491	Main Aluminum Shroud
193-046	1 Amp Fuse
215-018	Fuse Cap
235-026	Flat Cable, Display

To purchase the parts listed in Table 2 above or any items not listed in the table, contact the factory for assistance. To make sure the proper components are obtained, be sure to specify the *serial number* of the CTF878 at the time of purchase.

[no content intended for this page]

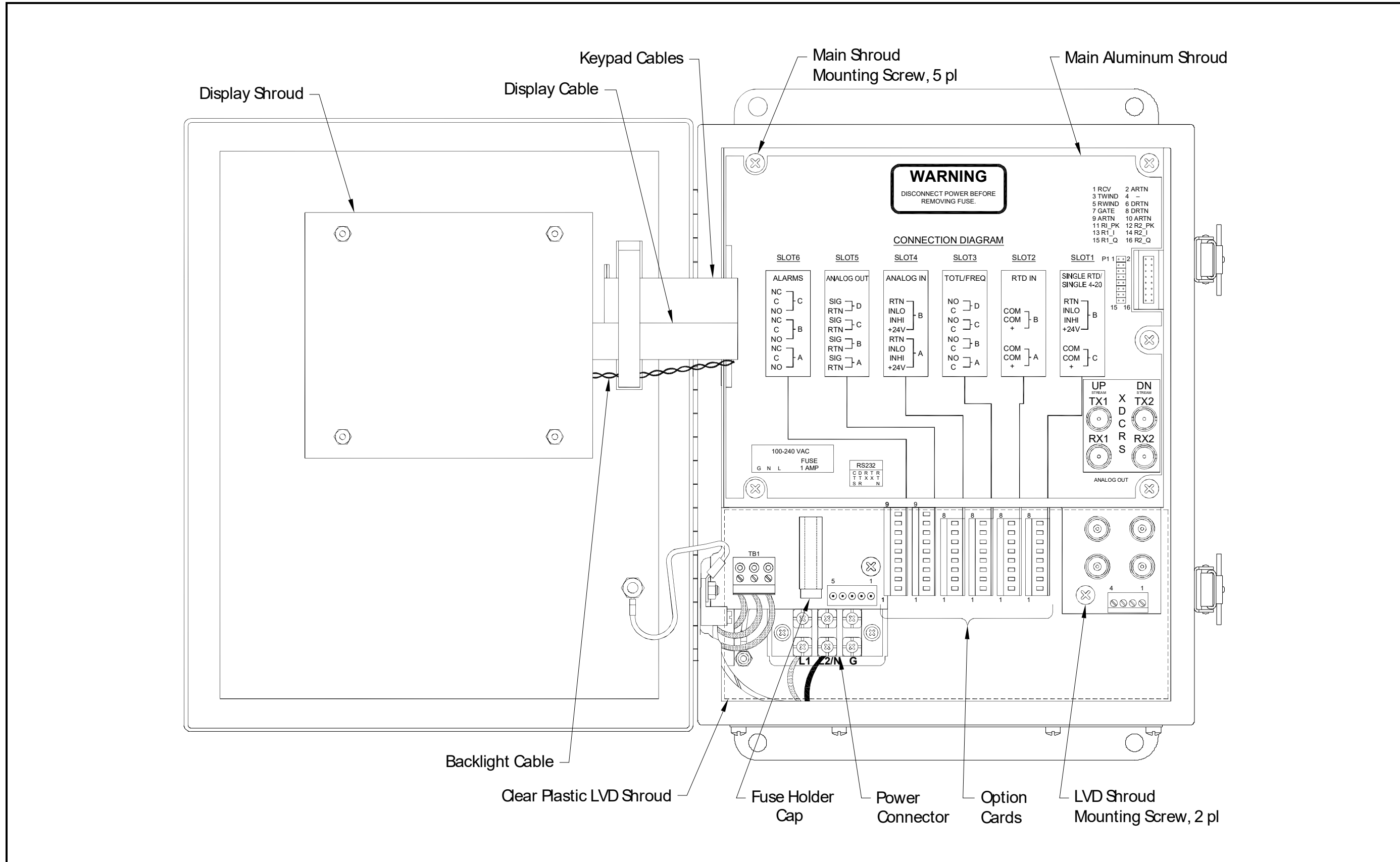


Figure 33: CTF878 Electronics Console Assembly

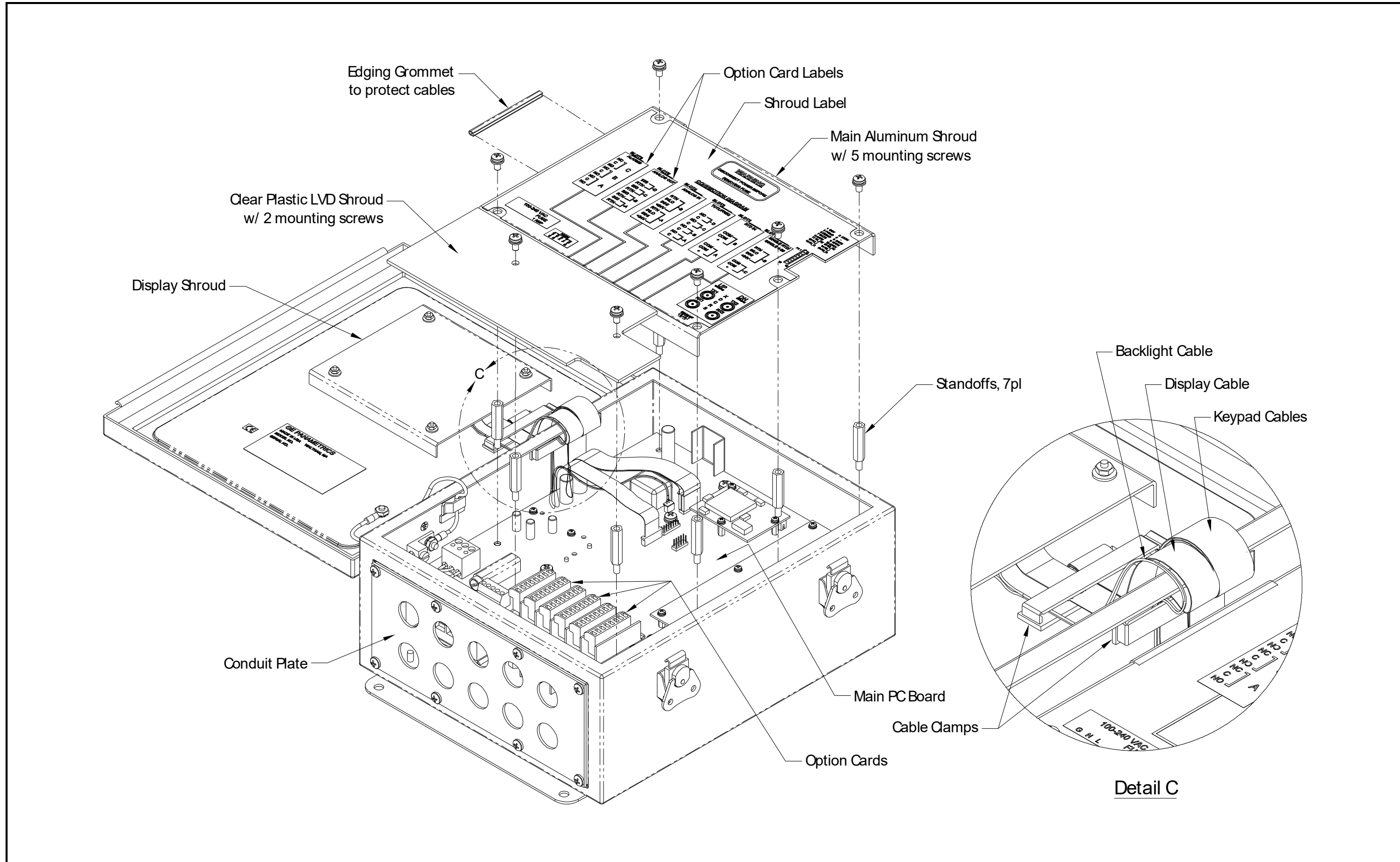


Figure 34: CTF878 Electronics Console Assembly - Isometric (ref. dwg #705-1204)



# Appendix A.

## A.1 Service Record

### A.1.1 Introduction

Whenever any service procedure is performed on the CTF868 flowmeter, the details of the service should be recorded in this appendix. An accurate service history of the meter can prove very helpful in troubleshooting any future problems.

### A.1.2 Data Entry

Record complete and detailed service data for the CTF868 in Table A-1 below. Make additional copies of the table as needed.

Date	Description of Service	Performed By

Date	Description of Service	Performed By

---

Date	Description of Service	Performed By

[no content intended for this page]

	<b>A</b>			<b>L</b>
Acceleration Limit.....		3	LCD Display .....	42
Analog Inputs			LVD Statement .....	37
Calibration .....		22		<b>O</b>
Testing .....		22	Option Card	
Analog Outputs			Bracket .....	40
Calibration .....		20	Guides.....	40
Testing .....		20	Installing .....	40
	<b>B</b>		Sockets.....	40
Backlight Cable.....		39, 41		<b>P</b>
Bracket, Option Card .....		40	Parts List, Spare .....	43
	<b>C</b>		Pipe	
Cable			Measurements .....	34
Backlight .....		39, 41	Problems .....	34
Display .....		42	Printed Circuit Board	
Calibration			Replacing .....	39
Analog Inputs .....		22	Problems	
Analog Outputs .....		20	Debris .....	34
Digital Outputs .....		24	Gas.....	34
RTD's .....		25	Inaccurate Measurements .....	34
Circuit Board			Pipe .....	34
See Printed Circuit Board			Transducers .....	34
Contamination, Gas .....		34		<b>R</b>
	<b>D</b>		Replacing	
Defaults, Resetting.....		10	See Part Name	
Diagnostics .....		31	RTD's	
Error Messages.....		31	Calibration .....	25
Option .....		0	Testing .....	25
Parameters, Displaying .....		0		<b>S</b>
Digital Outputs			Service Menu, Entering .....	-1, 9, 19
Calibration (accuracy verification) .....		24	Service Record .....	47
Testing .....		24	Shroud	
Display			Aluminum .....	37, 41
Cable .....		42	Clear Plastic .....	41
LCD.....		42	LCD Display.....	42
Replacing .....		42	LVD .....	41
	<b>E</b>		Signal Parameters, Setting up.....	1
Electronics, Error Messages .....		31	Signal Setup Option .....	1
Error Limits Option .....		2	Sockets, Option Card.....	40
Error Messages .....		31	Software, Updating.....	11
Errors Allowed.....		2	Spare Parts List.....	43
	<b>F</b>			<b>T</b>
Factory Defaults Option.....		10	Test Keys .....	6
Flash Update Option .....		15	Test Screen.....	5
Fuse			Testing	
Holder.....		38	Analog Inputs .....	22
Rating.....		38	Analog Outputs.....	20
Replacing.....		38	Digital Outputs .....	24
Size.....		38	RTD's .....	25
Type .....		38	Timer Circuit.....	7
	<b>G</b>		Timer Circuit, Testing.....	7
Gas			Transducers	
Contamination.....		34	Placement.....	34
Physical Requirements .....		34	Problems .....	34
Problems.....		34	Signal Limits .....	3
Guides, Option Card .....		40		

Troubleshooting..... 31  
Error Messages ..... 31

**V**

Velocity  
Averaging ..... 2  
Limits..... 3

**W**

Watchdog Test..... 7

**Z**

Zero Cutoff ..... 2

**DECLARATION  
OF  
CONFORMITY**

We,

**Panametrics Limited  
Shannon Industrial Estate  
Shannon, County Clare  
Ireland**

declare under our sole responsibility that the

**CTF878 Ultrasonic Flowmeter**

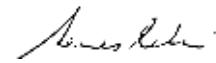
to which this declaration relates, are in conformity with the following standards:

- EN 61326:1998, Class A, Annex A, Continuous Unmonitored Operation
- EN 61010-1:1993 + A2:1995, Overvoltage Category II, Pollution Degree 2

following the provisions of the 2004/108/EC EMC Directive and the 2006/95/EC Low Voltage Directive.

Shannon - April 15, 2004

---



---

Mr. James Gibson  
GENERAL MANAGER



CERT-DOC-H0



August 2004

**DECLARATION  
DE  
CONFORMITE**

Nous,

**Panametrics Limited  
Shannon Industrial Estate  
Shannon, County Clare  
Ireland**

déclarons sous notre propre responsabilité que les

**CTF878 Ultrasonic Flowmeter**

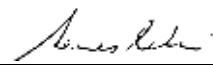
relatif à cette déclaration, sont en conformité avec les documents suivants:

- EN 61326:1998, Class A, Annex A, Continuous Unmonitored Operation
- EN 61010-1:1993 + A2:1995, Overvoltage Category II, Pollution Degree 2

suivant les règles de la Directive de Compatibilité Electromagnétique 2004/108/EC et de la Directive Basse Tension 2006/95/EC.

Shannon - April 15, 2004

---



---

Mr. James Gibson  
DIRECTEUR GÉNÉRAL



CERT-DOC-H0



August 2004



# KONFORMITÄTS- ERKLÄRUNG

Wir,

**Panametrics Limited  
Shannon Industrial Estate  
Shannon, County Clare  
Ireland**

erklären, in alleiniger Verantwortung, daß die Produkte

## **CTF878 Ultrasonic Flowmeter**

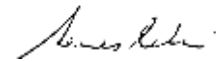
folgende Normen erfüllen:

- EN 61326:1998, Class A, Annex A, Continuous Unmonitored Operation
- EN 61010-1:1993 + A2:1995, Overvoltage Category II, Pollution Degree 2

gemäß den Europäischen Richtlinien, Niederspannungsrichtlinie Nr.: 73/23/EG und EMV-Richtlinie Nr.: 89/336/EG.

Shannon - April 15, 2004

---



---

Mr. James Gibson  
GENERALDIREKTOR



CERT-DOC-H0



August 2004



## Customer Support Centers

### U.S.A.

The Boston Center  
1100 Technology Park Drive  
Billerica, MA 01821  
U.S.A.  
Tel: 800 833 9438 (toll-free)  
978 437 1000  
E-mail: [mstechsupport@bakerhughes.com](mailto:mstechsupport@bakerhughes.com)

### Ireland

Sensing House  
Shannon Free Zone East  
Shannon, County Clare  
Ireland  
Tel: +353 61 470200  
E-mail: [mstechsupport@bakerhughes.com](mailto:mstechsupport@bakerhughes.com)

Copyright 2021 Baker Hughes company.

This material contains one or more registered trademarks of Baker Hughes Company and its subsidiaries in one or more countries. All third-party product and company names are trademarks of their respective holders.

BH010C61 EN A (08/2022)

**Baker Hughes** 