

# Everest Mentor Visual IQ VideoProbe™

Intelligent inspection solutions.



**More precise and efficient inspections are now possible with Waygate Technologies' Mentor Visual iQ VideoProbe. Driven by advanced analytics to inspect in entirely new ways, the more intelligent Mentor Visual iQ leverages computer vision and machine learning to increase data quality whilst reducing inspection times.**

#### **Unbeatable Clarity with TrueSight™**

- Crystal clear live video and still images in high definition (HD)
- Unlocks the power of digital zoom on device with new 1.2 mega pixel image sensor
- Blends high resolution image and precision optics with a powerful suite of proprietary image transformation functions

#### **Intuitive Design**

- Portable, lightweight, rugged, and versatile
- QuickChange™ probes with optical tip adaptors
- Integrated WiFi and Bluetooth
- On-screen keyboard
- Powered by high-capacity, rechargeable lithium ion batteries

#### **Real3D™ Measurement for Confident Decisions**

- Most advanced 3D capabilities for more precise measurement from increased distances
- Up to nine measurement types provide accurate, efficient and reliable measurement results
- Real time cursor adjustment in the fully surfaced Point Cloud
- Generate and measure larger areas of the inspected asset with 3D Stitching

#### **Enhanced Efficiency**

- Improve consistency and reliability of inspection with assisted defect recognition Analytics
- Automate repetitive tasks with Blade Counter
- Menu Directed Inspection (MDI) software that guides inspectors through the inspection process, intelligently names files and tags files, and creates inspection reports
- Specialty probes: LongSteer VideoProbe™ 2.2mm and 3.0mm USB probes, Working Channel VideoProbe, Quartz fiber VideoProbes (UV and radiation tolerance) and Borescope adapter (connect to rigid borescope and flexible fiberscope)



# Choose the right tool for your inspection job.

Mentor Visual iQ VideoProbe is available in three customized platform configurations to meet your inspection needs across a variety of industries and applications.



**Mentor Visual iQ Inspect**  
Excellent quality and connectivity at a value price



**Mentor Visual iQ Touch**  
Improve productivity with QuickChange probes and touchscreen



**Mentor Visual iQ Analyze**  
Our most capable VideoProbe with bundled 3D Measurement and Probability of Detection SW for extreme image quality

System	Inspect	Touch	Analyze
<b>Capability</b>			
High definition resolution	Y*	Y	Y
Connectivity • Wi-Fi/Bluetooth connectivity, network drive mapping	Y	Y	Y
PC Re-measurement with Inspection Manager	Y	Y	Y
Internal memory	16 GB	32 GB	32 GB
QuickChange probes	Y*	Y	Y
Compatible with Custom Probes, i.e., LongSteer, UV, 2.2mm USB, etc.	Y*	Y	Y
Menu Directed Inspection image management and reporting	Upgrade	Y	Y
Touchscreen interface	Upgrade	Y	Y
Real3D Measurement • 3D Phase Measurement with Fully Surfaced Point Cloud • 3D Stereo Measurement with Fully Surfaced Point Cloud • Projected plane measurement • Area depth profile measurement • Blade Tip Clearance auto measure	Upgrade	Upgrade	Y
Radius gauge measurement	Upgrade	Upgrade	Y
Traditional Measurement • Stereo Measurement • Comparison Measurement	Upgrade Y	Upgrade Y	Y
Probability of Detection Suite (POD) • Variable High Dynamic Range (HDR) Images • Adaptive Noise Reduction (ANR) • Distortion Correction for Wide FOV tips • Image Transform Presets • Dark Boost image settings	Upgrade	Upgrade	Y
InspectionWorks • Connect: Local+Control • Insight: push or send data to IW cloud portal • Store: download data from IW cloud portal	Y Upgrade Y	Y Upgrade Y	Y Upgrade Y
Turning Tool Support	Upgrade	Upgrade	Y
USB Video-In	Y	Y	Y
Always On DVR	Y	Y	Y
90 Day Free Trial of all SW features	Y	Y	Y
Image Rotation	Y	Y	Y
3D Image Stitching	Upgrade	Upgrade	Y**
Blade Counter	Upgrade	Upgrade	Upgrade
Assisted Defect Recognition (ADR) analytics: Gas Power assist, Aiir Edge Cold Section, Aiir Edge Hot Section	Upgrade	Upgrade	Upgrade

\* Requires interchangeable Inspect mode

\*\* Requires Real3D measurement

# The VideoProbe of the future.

The Mentor Visual IQ is changing the way remote visual inspections are being performed. Leveraging artificial intelligence and cloud-based digital tools to help improve productivity, accuracy, and reliability of inspection data.

## Powerful analytics

Artificial intelligence is being utilized across industries and functions, the Mentor Visual IQ is designed to enable a user to leverage analytical models from multiple sources.

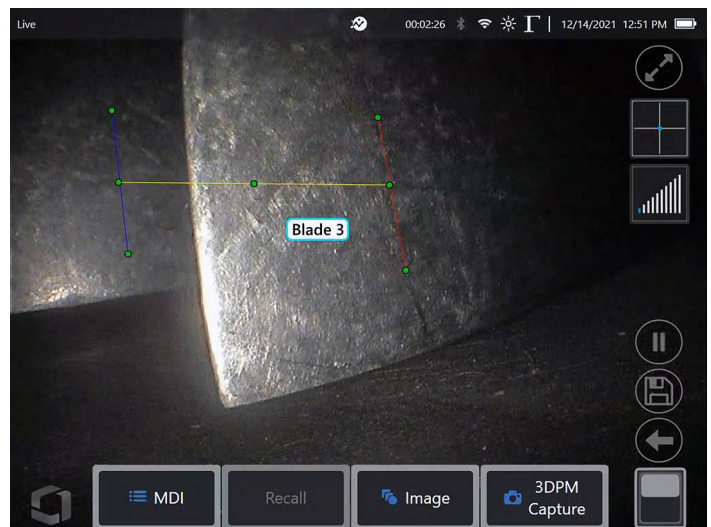
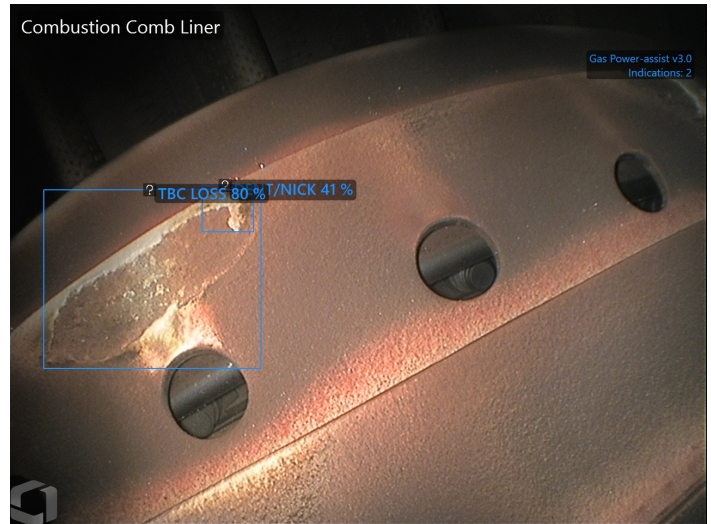
- Waygate Technologies Analytics. Gas Power assist and Blade Counter are analytics developed to improve reliability and data integrity
- Third Party Partner Analytics. Available directly on the Mentor Visual IQ, users can leverage Air Innovations' aviation commercial engine models for defect detection
- Third Party Private Analytics. For customers developing their own analytics, the Mentor Visual IQ enables deployment to a global team

Datasheets are available for each analytic to guide users through applicability and operating procedures.

## When and where you need them

The Mentor Visual IQ connects directly to the InspectionWorks Store to provide access to workflows and reference libraries. Available to all is the Public store which contains manuals, analytic data sheets, MDI templates and other reference materials. The Private store is available to InspectionWorks subscribers providing a secure repository for custom MDI workflows, analytics, reference documents, or any other resources your team may need to access and download on to their Mentor Visual IQ.

With Push2IW, data collected during an inspection is automatically pushed to the InspectionWorks Insight cloud, ensuring against data loss and reducing after-inspection data management tasks.



The Blade Counter analytic showing entry, exit lines and Blade number.

# Technical Specifications – Handset

## Operating Temperature

Tip	-25°C to 100°C (-13°F to 212°F). Reduced articulation below 0°C (32°F)
System	-25° to 46°C (-13°F to 115°F). LCD may require warm-up period below 0°C (32°F)
Storage Temperature	-25° to 60°C (-13°F to 140°F)
Relative Humidity	95% max, non-condensing
Waterproof	Insertion tube and tip to 14.7 psi (1 bar, 10.2 m of H <sub>2</sub> O, 33.5 ft of H <sub>2</sub> O)

## Camera

Diameter Probe	4.0 mm (0.16"), 6.1 mm (0.24"), 6.2mm (0.24"), 8.4 mm (0.33")
Image Sensor	1/6" Color Super HAD CCD camera (6.1, 8.4mm), 1/10" Color Super HAD CCD camera (3.9mm, 4.0mm, 6.2mm)
Pixel Count	SD 3.9, 4.0, 6.1, 6.2, 8.4 mm - 440k pixels HD 6.1, 8.4 mm - 1200k pixels
Housing	Titanium

## System

System Dimensions	17.1 x 19.7 x 38.1 cm (6.75 x 7.75 x 15")
Case Dimensions	Small carry-on case 54.9x 34.6x 23.6 cm (21.61x13.62x29") Medium size dual probe case 55.8 x 33.0 x 63.5 cm (22 x 13 x 25") Large workstation case 57.2 x 56.3 x 41.2 cm (22.52 x 22.16 x 16.22")
System Weight	In small case with contents: 10.2 kg (22.4 lbs). In medium case with contents: 10.9 kg (24 lbs). In large case with contents: 19.6 kg (43.2 lbs) Out of Case: 6120 system - 3.0 kg (6.7 lbs). 61100 system - 4.0 kg (8.7 lbs)
Construction	Magnesium and Polycarbonate housing with integrated elastomeric bumpers
LCD Monitor	Integrated (6.5") active matrix XGA color LCD, daylight readable display, with optically bonded, multipoint capacitive Dragontrail™ touchscreen (Pinch and zoom gesture support, on-screen radio and slider button activation)
Joystick Control	360° All-Way® tip articulation, menu access, and navigation
Button Set	Access user functions, measurement, and digital functions
Audio	Compatible with bluetooth headset/microphone
Internal Memory	16 GB (Inspect model) and 32 GB (Touch and Analyze model) internal SSD for user data storage
Data I/O Ports	Two USB 3.0 host 'A' ports, one USB 3.0 client micro 'B' port
Video Out	DisplayPort
Brightness Control	Auto and Variable
Illumination Type	White LED
Long Exposure	Auto - up to 16 seconds
White Balance	Factory default or user defined

## Power Supply

Lithium Ion Battery	10.8 V (nominal), 73 Wh, 6.8 Ah, two-hour typical run time
---------------------	------------------------------------------------------------

## Current

AC	100-240 VAC, 50-60 Hz, <1.5 A RMS
DC	18 V, 3.34 A

## Standards Compliance and Classifications

MIL-STD-810G	United States Department of Defense Environment Tests Sections 501.5, 502.5, 506.5, 507.5, 509.5, 510.5, 511.5, 514.6, 516.6, 521.3
MIL-STD-461G	U.S. Department of Defense - Electromagnetic Compatibility with RE102, and RS103 - ABOVE DECK
Standards Compliance	Group 1 Class A; EN61326-1, IEC CB Scheme, UL/EN/CSA-C22.2 61010-1, IEC 62133, UN/DOT T1-T8, EU RoHS 2, EU RED Directive, ISTA 2G
IP Rating	IP65 (assembled), IP55 (disassembled)

# Technical Specifications – Handset

## Software

Operating System	Embedded multi-tasking operating system
User Interface	Menu-driven and soft button operation; menu navigation using either touchscreen or joystick
File Manager	Embedded file manager supports the following operation on files and folders: copy, cut, paste, create, rename, delete, filter, sort, and image recall. USB and internal flash storage
Audio Data	PC Compatible ACC (.M4A file) format
Image Control	Brightness, Long Exposure, Invert, Inverse+, Single View, Illumination, Color Saturation Control, Distortion Correction, Adaptive Noise Reduction (ANR), High Dynamic Range (HDR) imaging, Dark Boost, and Image Transform Presets
Digital Zoom	Continuous (5x)
Image Formats	Bitmap (.BMP), JPEG (.JPG)
Video Format	MPEG4 AVC/H.264 (.MP4 file)
Text Annotation	Built-in on screen text overlay generator with selectable font size
Graphic Annotation	User placement of arrows
Articulation Control	User-selectable steer and Steer-and-Stay* articulation; tip "Home" return to neutral forward-tip orientation
Software Updates	Field upgradeable via upgradeable WiFi or USB ThumbDrive®
Languages	English, Spanish, French, German, Italian, Russian, Japanese, Korean, Portuguese, Chinese, Polish, Hungarian, Finnish and Swedish
Application Software	Menu Directed Inspection* (MDI) software digitally guides inspectors through the inspection process, intelligently names files and tags files and creates Microsoft® Word and PDF compatible inspection reports (MDI included on Analyze and Touch models, available as upgrade to Inspect model)

# Technical Specifications – Probes and Tips

## Probe Measurements

Diameter	Length
2.2 mm (0.086")	1.0m, 1.5m, and 2.0m (3.2, 4.9, 6.6 ft.)
3.0mm (0.118")	1.0, 1.5, 2 m (3.2, 4.9, 6.6 ft.)
4.0 mm (0.15")	2.0, 3.0 m (6.6, 9.8 ft.)
6.1 mm (0.24") <sup>†</sup>	2.0, 3.0, 3.5, 4.5, 6.0, 10.0 m (6.6, 9.8, 14.8, 19.7, 32.8 ft.)
6.2 mm (.24")	3.5 m (11.5 ft)
8.4 mm (0.33")	2.0, 3.0, 4.5, 6.0, 10.0 m (6.6, 9.8, 14.8, 19.7, 32.8 ft)

Longer lengths up to 30 m are available.  
Contact your sales representative for details.

## Insertion Tube Length Articulation

### 4.0mm, 6.1mm, and 8.4mm

Insertion Tube Length	Articulation
2 m – 4.5 m	Up/Down 160° min, Left/Right 160° min
6 m – 10 m	Up/Down 140° min, Left/Right 140° min

Note: Typical articulation exceeds minimum specifications.

### 6.2mm

Insertion Tube Length	Articulation
3.5m	Up/Down 130° min, Left/Right 130° min

Note: Typical articulation exceeds minimum specifications.

## Mentor Visual IQ 4.0 mm tips

Part No.	Color	FOV (deg)	DOF mm	(in)
<b>Forward View</b>				
T4080FF**	None	80	35-inf	(1.38-inf)
T40115FN	Black	115	4-inf	(.16-inf)
<b>Side View</b>				
T40115SN	Red	115	1-30	(.04-1.18)
T40120SF	Blue	120	6-inf	(.24-inf)

## StereoProbe™ Measurement<sup>††</sup>

TM405555FG <sup>††</sup>	Black	55/55-FWD	5-inf	(.20-inf)
TM405555SG <sup>††</sup>	Blue	55/55-SIDE	4-inf	(.16-inf)

\*\* Indicates tip with maximum brightness

<sup>†</sup> Indicates HD optimized

<sup>††</sup> Stereo and 3D Stereo use same lenses

### Mentor Visual IQ 6.1 mm tips

Part No.	Color	FOV (deg)	DOF mm	(in)
<b>Forward View</b>				
T6150FF	None	50	50-inf	(2.36-inf)
XLG3T6150FG	White	50	12-200	(.47-7.87)
XLG3T61120FG	Black	120	5-120	(.20-4.72)
XLG3T6180FN	Orange	80	3-20	(.12-.79)
XLG3T6190FF	Yellow	90	20-inf	(.79-inf)
XLG3T6150FB	Purple	50 (45 DOV)	12-80	(.47-3.15)
T6165FF**†	Orange and Blue	65	65-inf	(2.56-inf)
T61120FF	Gray	120	20-inf	.79"-inf

#### Side View

XLG3T6150SF	Brown	50	45-inf	(1.77-inf)
XLG3T6150SG	Green	50	9-160	(.35-6.30)
XLG3T61120SG	Blue	120	4-100	(.16-3.94)
XLG3T6180SN†	Red	80	1-20	(.04-.79)

#### 3D Phase Measurement

XL4TM61105FG†	Black	105	8-250	(.31-9.84)
XL4TM61105SG†	Blue	105	7-250	(.27-9.84)
XL4TM61105FN	Orange	105	3-120	(.12-4.72)
XL4TM61105SF†	Green	105	15-inf	(0.59-inf)
XL4TM61105SN	Red	105	2-20	(.08-.79)
XL4TM61105FF	Yellow	105	15-inf	(0.59-inf)

#### StereoProbe Measurement

XLG3TM616060FG <sup>††</sup>	Black	60/60-FWD	4-80	(.16-3.15)
XLG3TM615050SG <sup>††</sup>	Blue	50/50-SIDE	2-50	(0.8-1.97)

### Mentor Visual IQ 6.2 mm tips

Tip View	Color	FOV (deg)	DOF mm	(in)
<b>Standard Tip Optics</b>				
<b>Forward View</b>				
T6280FF	Silver ring	80	35 - inf	(1.38- inf)
T62120FN	Black	120	2 - 200	(0.08 - 7.87)
T62120FF	Yellow	120	15 - inf	(0.59 - inf)
<b>Side View</b>				
T62120SN	Blue	120	6 - inf	(0.24 - inf)
T6280SF	Green	80	15 - inf	(0.59 - inf)

#### StereoProbe Measurement Tip

<b>Forward View</b>				
TM626060FN	Black	60/60	2 - 200	(0.08-7.87)
<b>Side View</b>				
TM626060SN	Blue	60/60	2 - 200	(0.08-7.88)

### Mentor Visual IQ 8.4 mm tips

Part No.	Color	FOV (deg)	DOF mm	(in)
<b>Forward View</b>				
XLG3T8440FF**	None	40	250-inf	(9.84-inf)
XLG3T8440FG	White	40	80-500	(3.15-19.68)
XLG3T8480FG	Yellow	80	25-500	(.98-19.68)
T84120FF	Orange and Blue	120	20-inf	(0.79-inf)
XLG3T84120FN	Black	120	5-200	(.20-7.87)
<b>Side View</b>				
XLG3T8440SF**	Brown	40	250-inf	(9.84-inf)
XLG3T8480SG	Green	80	25-500	(.98-19.68)
XLG3T84120SN	Blue	120	4-200	(.16-7.87)

#### StereoProbe Measurement<sup>††</sup>

XLG3TM846060FG <sup>††</sup>	Black	60/60-FWD	4-50	(.16-1.97)
XLG3TM846060SG	Blue	60/60-SIDE	4-50	(.16-1.97)

\*\*Indicates tip with maximum brightness

† Provides increased image detail with HD probes

†† Stereo and 3D Stereo use same lenses

# Technical Specification – Analytics

Analytic Part No.	Description	Applicability
MVIQ-BLADECOUNT*	Live Analytic: detects, tracks and trigger blade edges moving in real time	Gas turbine blades (compressor and turbine)
MVIQ-AIIRADRIAN (1 year license)* UG-MVIQ-AIIRADRIAN (add to existing device, 1 year license)*	Still and live ADR Analytic (x2): automatically detect defects within aerospace gas turbines	Gas turbine blades (compressor and turbine) Combustion and TBC coated HPT components CF6, CFM56 5A/B/C, CFM56 7B, V2500, PW 1100, GEnx, CF34, GE90, LEPA, PW 2000, Trent 700, Trent 900, Trent 1000
MVIQGASPWRADR (perpetual)* MVIQ GASPWRADRIAN (1 year license)* UG-MVIQ-GASPWRADR (add to existing device, perpetual)* UG-MVIQ-GASPWRADRIAN (add to existing device, 1 year license)*	ADR analytic capable of detecting and categorizing defects during live inspections	Gas turbine blades (compressor and turbine) Combustion and TBC coated HPT components Gas Power assist

\*Refer to analytic datasheet for more information

Note: UG part numbers will provide a thumb drive to the customer for installation locally, or they can update over-the-air (InspectionWorks).